



Item	Value	Remark
Wireless protocol	Bluetooth low energy mesh protocol	
Operating Frequency	2.4GHz	
Antenna	Onboard chip antenna	
Transmission Range	>50M	open side
Power Supply	Typ. 3.3V	
Interface port	1ch – PWMx1	
Operating Environment	-40~+45 °C	
Dimension	Case:43(L)x31(W)x12(H)mm	
	lead length: 150mm	

Subject to change without notice, HEP guarantees all products perform functionally well

Lighting Control APP

The APP can be downloaded on Apple Store and Google Play Store for iOS and Android.

You can search APP name "casambi", or scanning the QR code.



Driver list approved by HEP

Model
LLWC12W300NLR
LLWC25W600NLR
LTWC40W1050NLR

CASAMBI

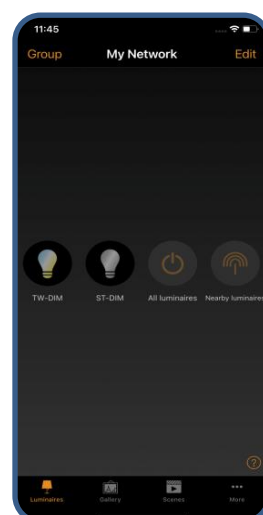
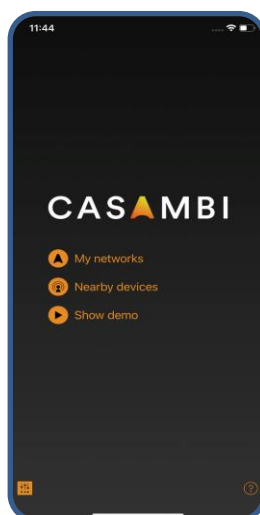


Android

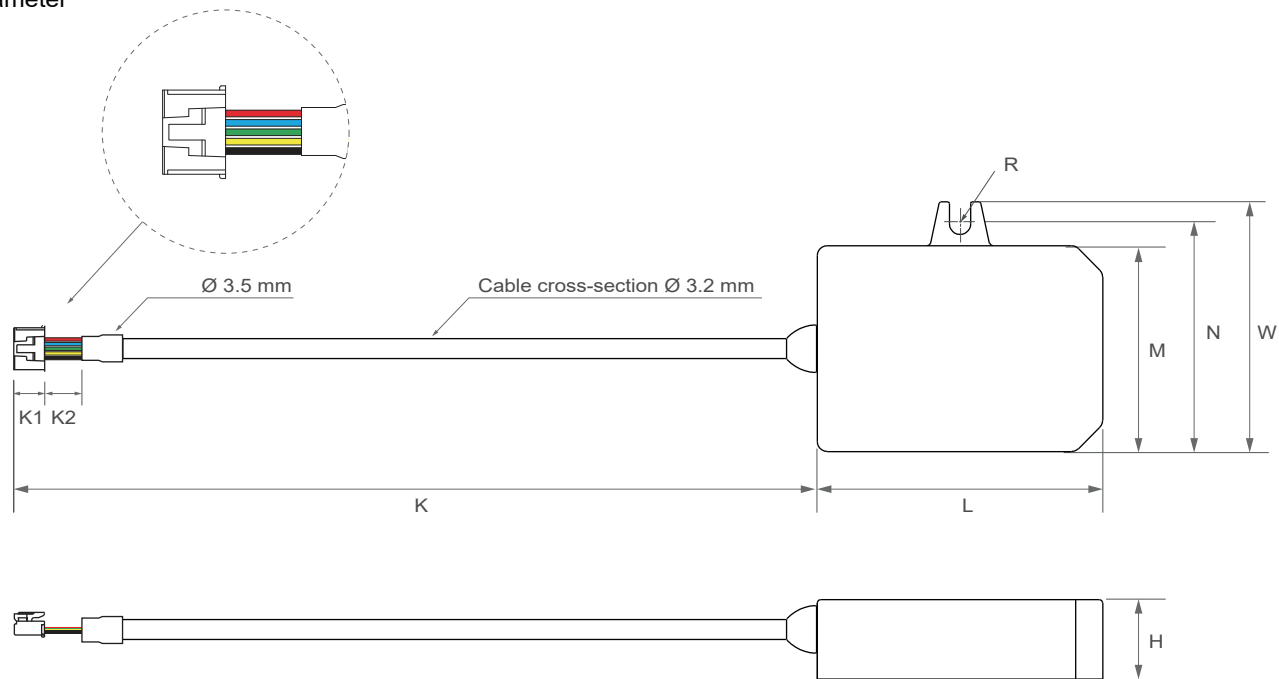


iOS

Website : <https://casambi.com/>



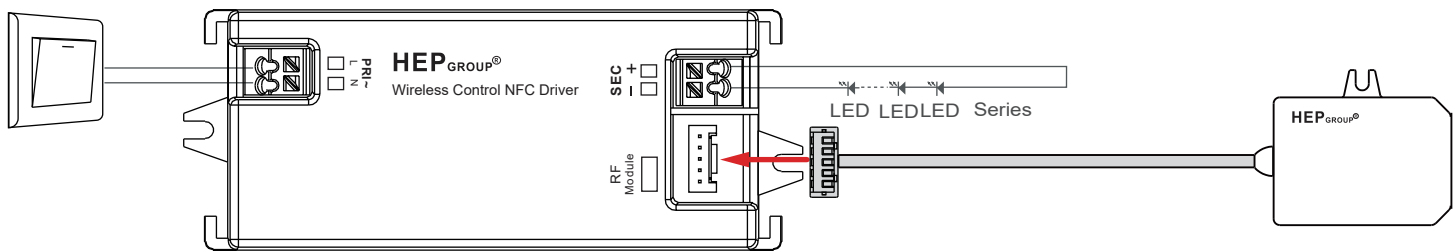
Physical
Parameter



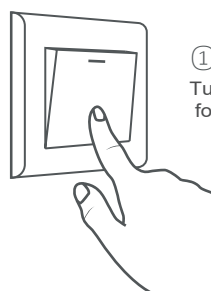
L : 43 mm	R : 1.6 mm	Tolerance : +/-1 mm , R : +/-0.5 mm
W : 37.6 mm	M : 31 mm	Housing Material : Polycarbonate
H : 12 mm	N : 34 mm	Soldering : Lead-Free, Comply With RoHS
Slot On One Side Allowing Alignment : M+/-3 mm		Label : Surface Print

Wire type : Lead length 150mm
K : 170.4 mm K1 : 20 mm K2 : 8 mm

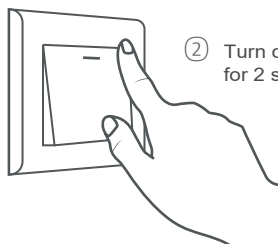
WiringDiagram



***Reset device(Restore factory settings) :**
When the power is on.



① Turn off the power for 15 seconds.



② Turn on the power for 2 seconds

- ③ Repeat steps 1-2 for 5 times
④ When the light source of the lamp flashes, the setting is completed.



(the light source flashes 2 times per second)