



Approval Marks



- LWDC25W700NLR-T2CH-W
- LWDC25W700NLR-T2CH-B
- LWDC25W700NLR-T2CH-G



Item	Value	Remark
Nominal voltage	220–240V	
Nominal frequency	50–60Hz	
AC voltage range	198–264V	
DC voltage range (start)	NA	
DC voltage range (operation)	NA	
Maximum voltage	NA	
Nominal current	140mA	
Total Harmonic Distortion (THD)	< 10%	Full load @230VAC
Power factor	0.4C-0.97	Min-load @ 240Vac and Full-load @ 220 Vac
Displacement factor	0.4C-0.97	Min-load @ 240Vac and Full-load @ 220 Vac
Efficiency	82% (Typ.)	Full load @230VAC
No-load power	NA	
Stand-by power	< 0.5W	
Protection class	II	
Inrush current	8A / 80 us	
Max.units per circuit breaker	Type B , 10A MCB	29
	Type B , 16A MCB	46
	Type C , 10A MCB	36
	Type C , 16A MCB	57
Earth leakage current	NA	
Output	Nominal voltage range	
	200 - 500mA	10-50 Vdc
	550mA	10-45 Vdc
	600mA	10-42 Vdc
	650mA	10-39 Vdc
	700mA	10-36 Vdc
	Maximum voltage	60 Vdc
	Output channels	2
Nominal current range	200-700mA	DC Output with adjustable constant current from 200 to 700 mA via NFC in 1mA steps. Factory default 200mA

	Item	Value	Remark
Output	Current accuracy	± 5%	
	Typical output LF current ripple	± 5%	Low Frequency < 120Hz Full load @ 230VAC
	Starting time	< 0.5 S	Full load @ 230VAC
	SVM	≤ 0.4	Full load @ 230VAC
	PstLM	≤ 1	Full load @ 230VAC
	Nominal power range	2-25W	
	Maximum power	25W	
	Color tuning range	1500K-10000K	Adjusted via NFC program Factory default 2000K-10000K
Dimming	Dimming control	DALI	
	Dimming range	1-100%	
	Lowest dimming current	0.1%-2%	
	Dimming technique	Amplitude	
	PWM frequency	NA	
	Galvanic isolation	Basic insulated to PRI and supplementary insulated to SEC	
Environment	Ambient temperature range t _a	-20°C - +35°C	
	Maximum case temperature t _c	70°C	
	Max. case temp. in fault condition	110°C	When operating under fault conditions, the temperature of the enclosure at any location should not exceed 110 °C
	Storage temperature range	-40°C - +85°C	
	Relative humidity	10% - 95%	
	Surge transient protection	1 kV	L/N
	Environmental rating	Indoor	
	IP rating	IP20	
	Mains switching cycles	>100,000	
	Expected lifetime	> 50,000 h, t _c 70 °C @ t _a 35 °C > 100,000 h, t _c 60 °C @ t _a 25 °C	0.2 % / 1,000 h failure rate 0.1 % / 1,000 h failure rate
Packing	Gross weight/box	7.0 kg	
	Net weight/box	6.0 kg	
	Pcs/box	35 PCS	
	Dimension/box	385(L)*310(W)*260(H)mm	
Protections			
Short-circuit Protection	Auto recovery		
Open-circuit Protection	Auto recovery		
Overload Protection	Auto recovery		
Conformity & Standards			
Safety standard:	EN 61347-1, EN 61347-2-13, EN 62493		
Performance:	EN 62384		
EMC standard:	EN 55015, EN 61000-3-2, EN 61000-3-3, EN 61547		
SAA standard:	AS/NZS 61347.1, AS 61347.2.13		
DALI protocol standard:	EN 62386-101, EN 62386-102, EN 62386-207, EN 62386-209		
Cable information			
SEC	+	-	
Cable cross-section	0.34-0.5□/AWG 22-20	0.34-0.5□/AWG 22-20	
Stripping	9mm	9mm	
Terminal information			
PRI-Contact metal			
SEC-Push button/Angled Entry			
DALI-Contact metal			

Subject to change without notice, HEP guarantees all products perform functionally well

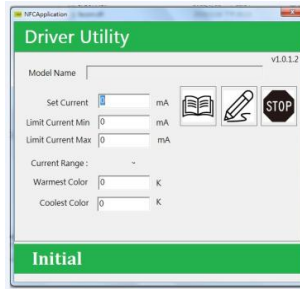
* If not mentioned, all the test conditions are based on full load at 230VAC input (for 220-240 VAC input).

Current adjustable

NFC Reader (optional)

Feature:

Easily on-line read a output current from a driver or write a new current data to a driver throughout HEP NFC reader within few seconds.



APP NFC

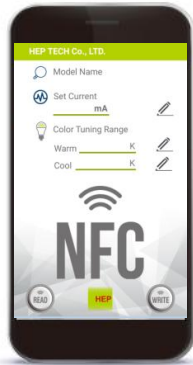
Feature:

Quickly check output current of a LED driver simply via Android smart phone, as well as, correct or setup a new current data immediately with no extra equipment at any job site.

ICON



Main



QR Code

Google play



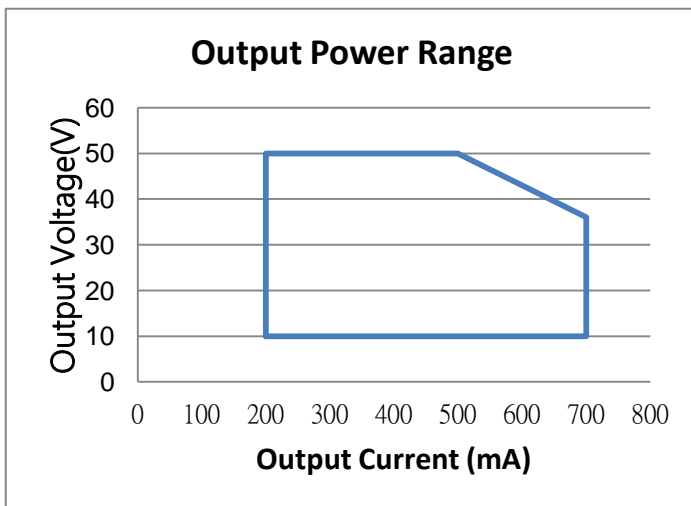
APK



Android 6.0 Up

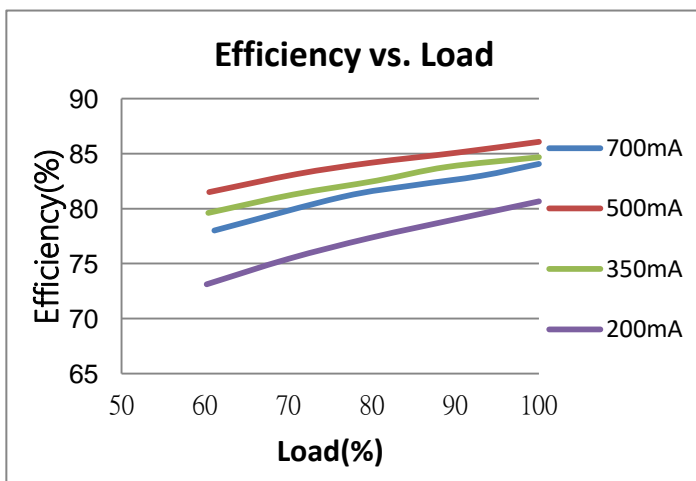
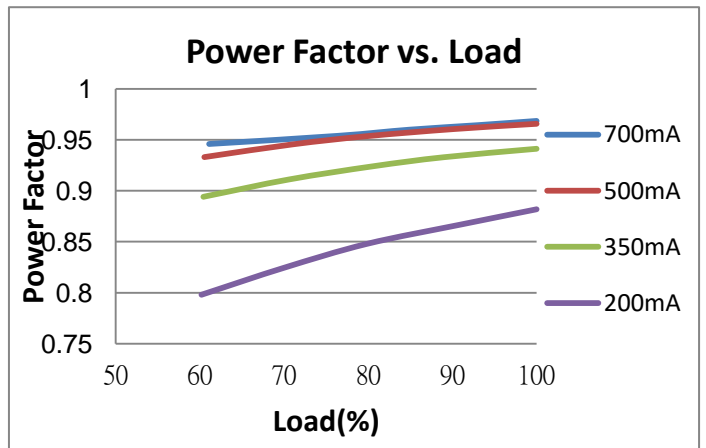
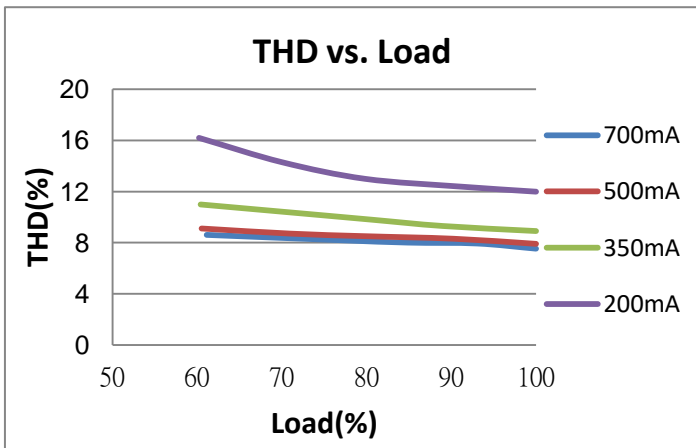
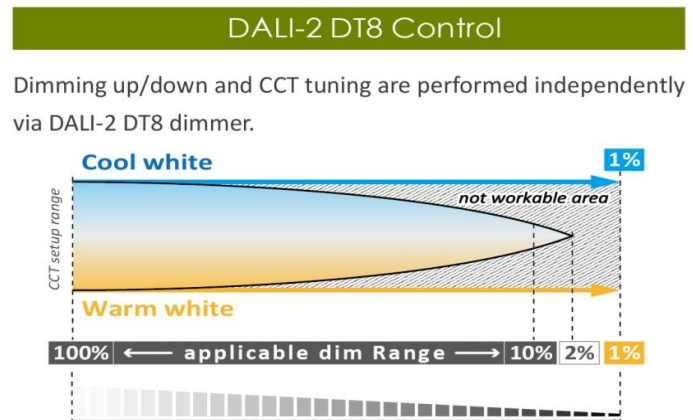
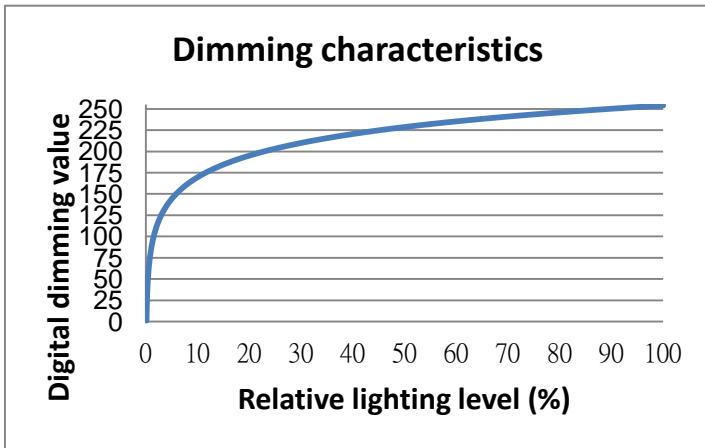
Smart phone with a NFC function

Electrical Values



Output Current (mA)	Output Voltage Range (V)	Output Power Range (W)
700	10-36	7.0-25.0
650	10-39	6.5-25.0
600	10-42	6.0-25.0
550	10-45	5.5-25.0
500	10-50	5.0-25.0
450	10-50	4.5-22.5
400	10-50	4.0-20.0
350	10-50	3.5-17.5
300	10-50	3.0-15.0
250	10-50	2.5-12.5
200	10-50	2.0-10.0

* Upon client's special demand, customized current range in between 200 mA and 700 mA could be specified as factory default from shipment. This default current range available revised again via NFC reader program at client's site, if necessary.



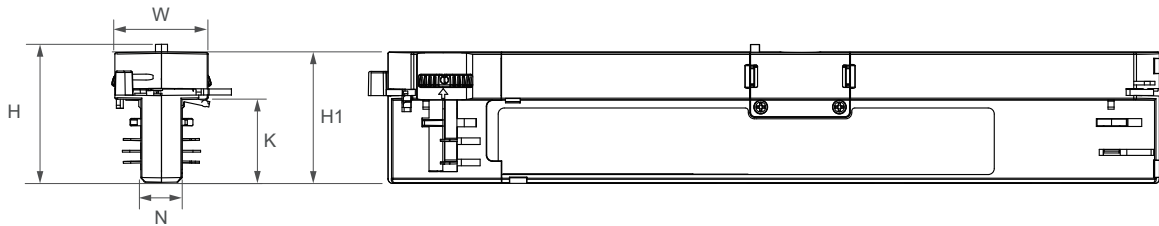
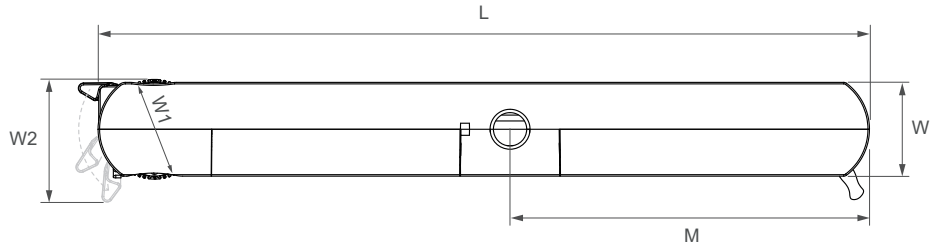
Label

HEP GROUP® HEP GmbH - Ramsloh 10 58579 Schalksmuehle - Germany UN= 220-240V IN= 140mA max. $\lambda= 0.4C-0.97$ fN= 50-60Hz ta= -20°C - +35°C	DALI LED Driver LWDC25W700NLR-T2CH Tunable White (DT8) Urange= 10-50 Vdc Irated= 200-700mA const. Prated= 2-25W max. ratings Uout= 60V max. for output details see datasheet	CW LED2	WW LED1	GMA-513600 05 CE DALI UK CA	Top side NFC)) 9mm wire preparation 0.34-0.5/AWG 22-20
	SEC SELV $t_c= 70^{\circ}C$				

Physical Parameter

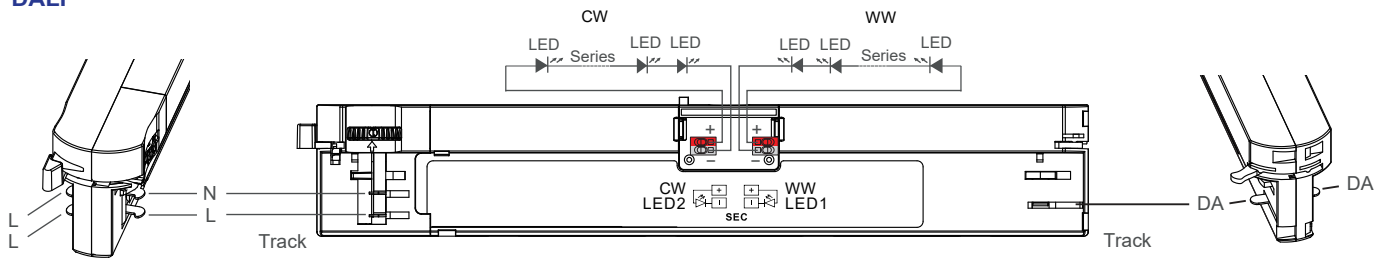
L : 255.0 mm W1 : 33.0 mm
 W : 31.0 mm W2 : 41.5 mm
 H : 45.9 mm H1 : 43.4 mm
 N : 13.7 mm M : 136.2 mm
 K : 27.5 mm

Tolerance : $\geq +/-1$ mm
 Housing Material : Polycarbonate

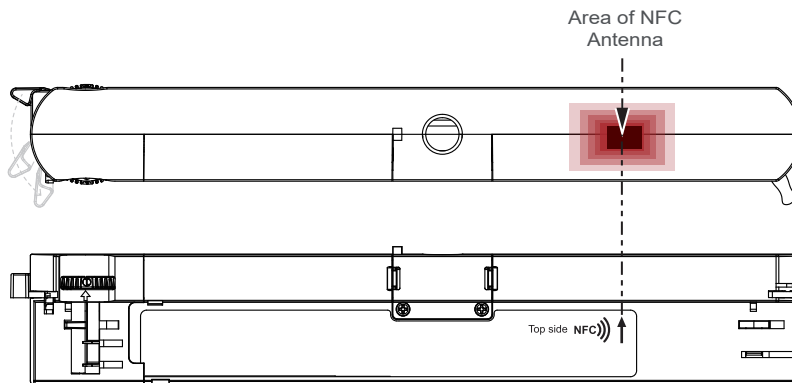


Wiring Diagram

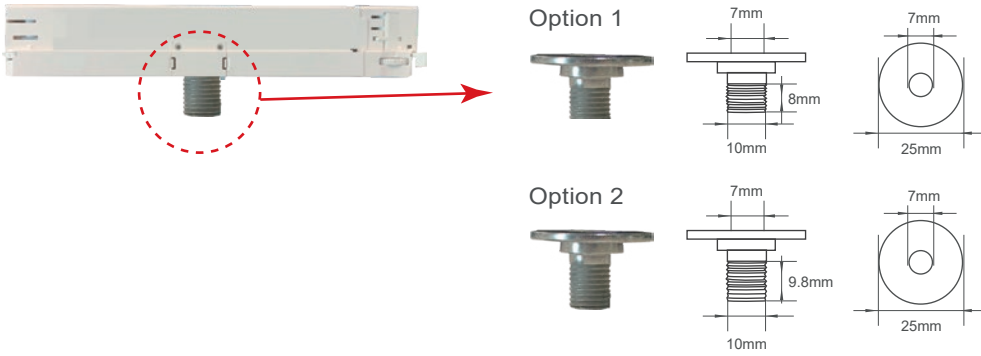
DALI



NFC Antenna Location



Lamp screw type



Load-bearing : 50N(11lbs)

The driver could be compatible with Global, Powergear, STUCCHI on 3-phase-circuit track system.

Manufacturer	Type	Model	System
NORDIC ALUMINIUM	Global Track pulse DALI	XTSC 6x00 XTSCF 6x00 x=1,2,3,4	3-phase + DALI
STUCCHI	Three-Phase Track + Control System	9000-.../...-ST 9000-.../...-R	3-phase + DALI
POWERGEAR	3 Circuits DALI Track System	PRO-06x0,06400 PRO-06x0,R6400 x=1,2,3	3-phase + DALI

MECHANICAL LOAD DIAGRAM

