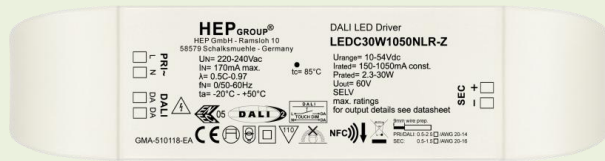


### Approval Marks



Item	Value	Remark
Nominal voltage	220–240V	
Nominal frequency	50–60Hz	
AC voltage range	198–264V	
DC voltage range (start)	280V	
DC voltage range (operation)	280V-370V	
Nominal current		
150mA	75mA	
250mA	90mA	
300mA	105mA	
350mA	110mA	
450mA	145mA	
500mA	155mA	
600/700/800/900/1000/1050mA	170mA	
Total Harmonic Distortion (THD)	< 15%	Full load @230VAC
Power factor	0.5C-0.97	Full load @230VAC
Displacement factor	0.5C-0.97	Full load @230VAC
Efficiency	85% (Typ.)	Full load @230VAC
No-load power	NA	
Stand-by power	< 0.3W	
Networked standby power	< 0.3W	
Protection class	II	Suitable for class II luminaires
Inrush current	15 A / 30 μs	
Earth leakage current	NA	
Nominal voltage range		
150/250/300mA	15-54Vdc	
350/450/500mA	10-54Vdc	
600mA	10-50Vdc	
700mA	10-42Vdc	
800mA	10-37.5Vdc	
900mA	10-33Vdc	
1000mA	10-30Vdc	
1050mA	10-28.5Vdc	
Maximum voltage	60Vdc	
Nominal current range	150-1050mA	
Current accuracy	± 5%	Full load @230VAC
Typical output LF current ripple	± 5%	Low Frequency< 120Hz Full load @230VAC
Starting time	< 0.5 S	Full load @230VAC

	Item	Value	Remark
	SVM	≤ 0.4	Full load @230VAC
	P <sub>stLM</sub>	≤ 1	Full load @230VAC
Output	Nominal power range		
	150mA	2.3-8.1W	
	250mA	3.8-13.5W	
	300mA	4.5-16.2W	
	350mA	3.5-18.9W	
	450mA	4.5-24.3W	
	500mA	5.0-27.0W	
	600mA	6.0-30.0W	
	700mA	7.0-29.4W	
	800mA	8.0-30.0W	
	900mA	9.0-29.7W	
	1000mA	10.0W-30.0W	
	1050mA	10.5-29.9W	
	Maximum power	30W	
Dimming	Dimming control	DALI	Touch Dim
	Dimming range	0.1-100%	5-100%
	Lowest dimming current	0.6mA	Maximum Load
	Dimming technique	Hybrid Dimming	
	PWM frequency	1KHz	
	Galvanic isolation	Basic insulated to PRI and double insulated to SEC	
Environment	Ambient temperature range t <sub>a</sub>	-20°C - +50°C	
	Maximum case temperature t <sub>c</sub>	85°C	
	Max. case temp. in fault condition	110°C	When operating under fault conditions, the temperature of the enclosure at any location should not exceed 110 °C
	Storage temperature range	-40°C - +85°C	
	Relative humidity	10% - 95%	
	Surge transient protection	1 kV	L/N
	Environmental rating	Indoor	
	IP rating	IP20	
	Mains switching cycles	> 100,000	
	Expected lifetime	> 50,000 h, t <sub>c</sub> 85 °C @ t <sub>a</sub> 50 °C	0.2 % / 1,000 h failure rate
		> 100,000 h, t <sub>c</sub> 75 °C @ t <sub>a</sub> 40 °C	0.1 % / 1,000 h failure rate
	Packing	Gross weight/box	16.2 kg
Net weight/box		14.8 kg	
Pcs/box		65 PCS	
Dimension/box		385(L)*310(W)*260(H)mm	
Protections	Short- circuit protection	auto recovery	
	Open- circuit protection	auto recovery	
	Overload protection	auto recovery	
<b>Conformity &amp; Standards</b>			
Safety standard:	EN 61347-1, EN 61347-2-13, EN 62493		
Performance:	EN 62384		
SAA standard:	AS/NZS 61347.1, AS/NZS IEC 61347.2.13		
EMC standard:	EN 55015, EN 61000-3-2, EN 61000-3-3, EN 61547		
DALI protocol standard:	EN 62386-101, EN 62386-102, EN 62386-207		

### Cable information

#### PRI Connection

Cable cross-section 0.5-2.5 □/AWG 20-14

Stripping 9mm

#### SEC Connection

Cable cross-section 0.5-1.5 □/AWG 20-16

Stripping 9mm

#### DALI Connection

Cable cross-section 0.5-2.5 □/AWG 20-14

Stripping 9mm

### Terminal information

PRI- Push button

SEC- Push button/Angled Entry

DALI- Push button

\* If not mentioned, all the test conditions are based on full load at 230VAC input (for 220-240 VAC input).

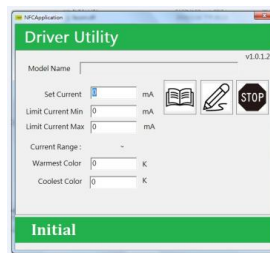
\*Subject to change without notice, HEP guarantees all products perform functionally well\*

## Current adjustable

### NFC Reader (optional)

Feature:

Easily on-line read a output current from a driver or write a new current data to a driver throughout HEP NFC reader within few seconds.



### APP NFC

Feature:

Quickly check output current of a LED driver simply via Android smart phone, as well as, correct or setup a new current data immediately with no extra equipment at any job site.

#### ICON



#### Main



#### QR Code

Google play

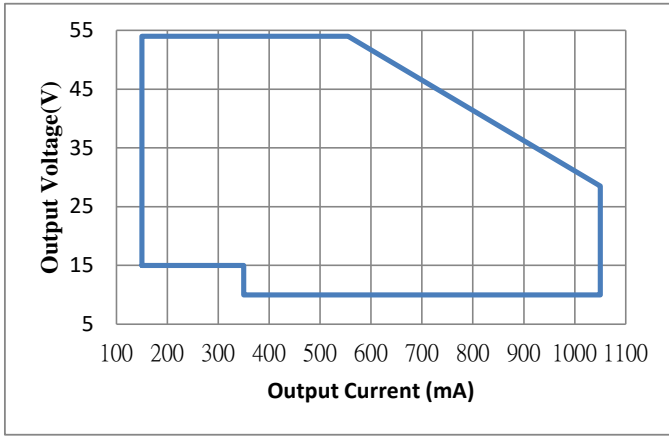
APK



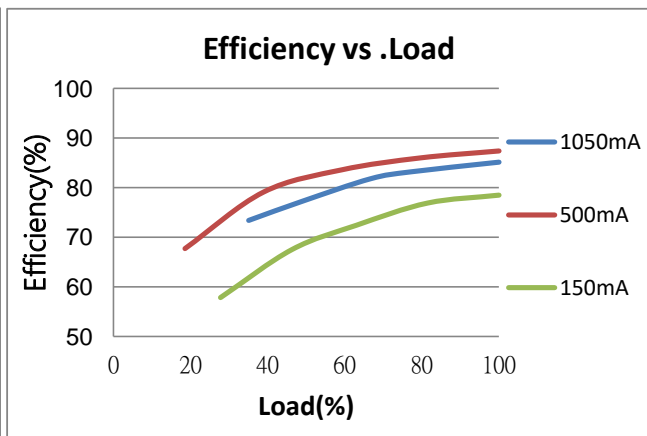
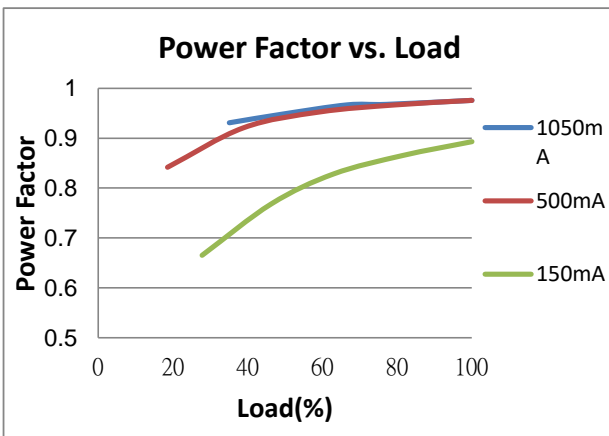
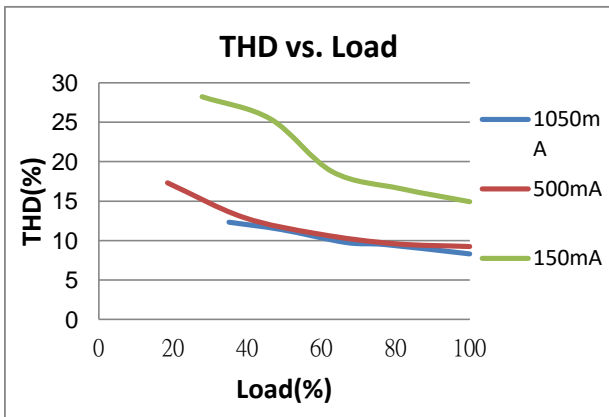
Android 4.2 Up

Smart phone with a NFC function

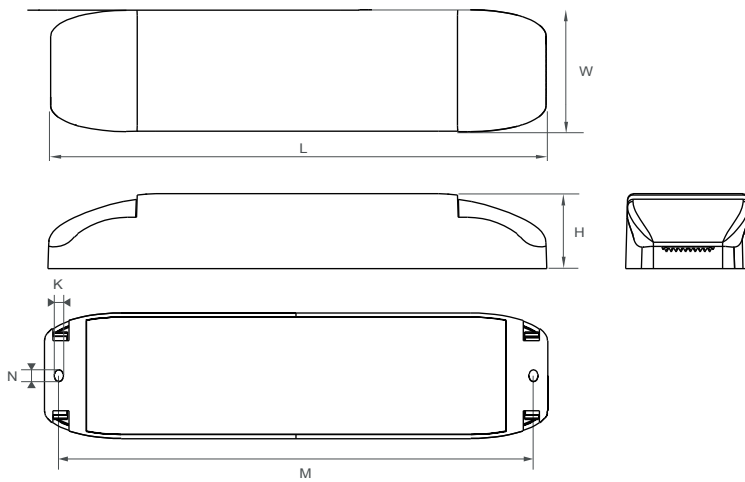
**Electrical Values**



Output Current (mA)	Output Voltage Range (V)	Output Power Range (W)
1050	10-28.5	10.5-30.0
1000	10-30.0	10.0-30.0
900	10-33.0	9.0-29.7
800	10-37.5	8.0-30.0
700	10-42.0	7.0-29.4
600	10-50.0	6.0-30.0
500	10-54.0	5.0-27.0
450	10-54.0	4.5-24.3
350	10-54.0	3.5-18.9
300	15-54.0	4.5-16.2
250	15-54.0	3.8-13.5
150	15-54.0	2.3-8.1



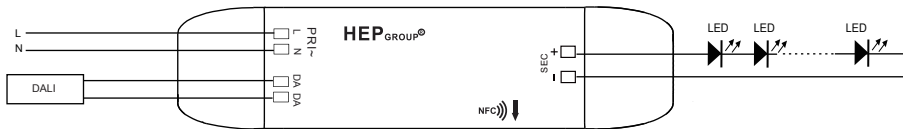
**Physical  
Parameter**



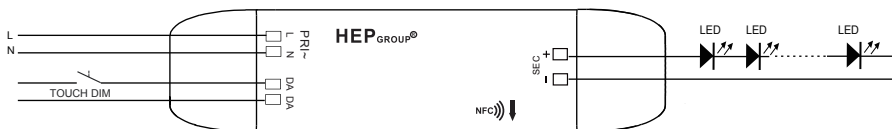
L : 180 mm    H : 27 mm    W : 45 mm  
M : 170 mm    N : 4.5 mm    K : 3.2 mm  
Slot On One Side Allowing Alignment : M+/-3 mm  
Tolerance : +/-1 mm , R : +/-0.5 mm  
Housing Material : Polycarbonate  
Soldering : Lead - Free, Comply With RoHS  
Label : Surface Print

**Wiring Diagram**

**DALI system**



**TOUCH DIM**



**NFC Antenna Location**

