



Approval Marks



Item	Value	Remark	
Nominal voltage	220-240V		
Nominal frequency	50–60Hz		
AC voltage range	198-264V		
DC voltage range (start)	N/A		
DC voltage range (operation)	N/A		
Nominal current	50mA		
Total Harmonic Distortion (THD)	< 20%	Full load @230VAC	
Power factor	0.9C	Full load @230VAC	
Displacement factor	0.9C	Full load @230VAC	
Input Efficiency			
	G5RT7W150/350LRP	75%(Typ.)	Full load @230VAC
	G5RT7W500/700LRP	72%(Typ.)	Full load @230VAC
No-load power	NA		
Stand-by power	NA		
Protection class	NA		
Inrush current	9A / 23us		
Max.units per circuit breaker	Type B , 10A MCB	80	
	Type B , 16A MCB	128	
	Type C , 10A MCB	100	
	Type C , 16A MCB	160	
Earth leakage current	NA		
Output	Nominal voltage range		
	G5RT7W150LRP	30-42Vdc	
	G5RT7W350LRP	12-22Vdc	
	G5RT7W500LRP	9-13Vdc	
	G5RT7W700LRP	6-9Vdc	
	Maximum voltage		
	G5RT7W150LRP	55V	
	G5RT7W350LRP	28V	
	G5RT7W500LRP	21V	
	G5RT7W700LRP	18V	

	Item	Value	Remark
Output	Nominal current range		
	G5RT7W150LRP	150mA	Full load @220~240VAC
	G5RT7W350LRP	350mA	Full load @220~240VAC
	G5RT7W500LRP	500mA	Full load @220~240VAC
	G5RT7W700LRP	700mA	Full load @220~240VAC
	Current accuracy		Full load @220~240VAC
	G5RT7W350/500/700LPR	± 5%	
	G5RT7W150LPR	±7%	
	Typical output LF current ripple	± 5%	Low Frequency<120Hz
	SVM	≤ 0.4	Full load @230VAC
P _{st} LM	≤ 1	Full load @230VAC	
Dimming	Nominal power range		
	G5RT7W150LRP	4.5-6.3W	
	G5RT7W350LRP	4.2-7.7W	
	G5RT7W500LRP	4.5-6.5W	
	G5RT7W700LRP	4.2-6.3W	
Maximum power	7W		
Dimming	Dimming control	Trailing Edge	
	Dimming technique	Amplitude	
	PWM frequency	NA	
	Dimming range	10-100%	
	Lowest dimming current	2-6%	
	Galvanic isolation	NA	
Environment	Ambient temperature range t _a	-20°C - +50°C	
	Maximum case temperature t _c	80°C	
	Max. case temp. in fault condition	110°C	When operating under fault conditions, the temperature of the enclosure at any location should not exceed 110 °C
	Storage temperature range	-40°C - +85°C	
	Relative humidity	10% - 95%	
	Surge transient protection	1 kV	L/N
	Environmental rating	Indoor	
	IP rating	IP20	
	Mains switching cycles	> 100,000	
	Expected lifetime	> 50,000 h, t _c 80 °C @ t _a 50 °C > 100000 h, t _c 70 °C @ t _a 40 °C	0.2 % / 1,000 h failure rate 0.1 % / 1,000 h failure rate
Packing	Gross weight/box	4.1 kg	
	Net weight/box	3.7 kg	
	Pcs/box	60 PCS	
	Dimension/box	240(L)*190(W)*185(H)mm	
Protections			
Short-circuit Protection	Auto recovery		
Open-circuit Protection	Auto recovery		
Overload Protection	Auto recovery		
Conformity & Standards			
Safety standard:	EN 61347-1, EN 61347-2-13, EN 62493		
Performance:	EN 62384		
EMC standard:	EN 55015, EN 61000-3-2, EN 61000-3-3, EN 61547		

Cable information

PRI Connection	L	N
Color	Brown	Blue
Wire type	7022	7022
Wire diameter	AWG20	AWG20
Wire length	138mm	138mm
Stripping	6mm	6mm
tolerance	±5mm	±5mm

Sec Connection	+	-
Color	Red	Black
Wire type	3385	3385
Wire diameter	AWG22	AWG22
Wire length	138mm	138mm
Stripping	6mm	6mm
tolerance	±5mm	±5mm

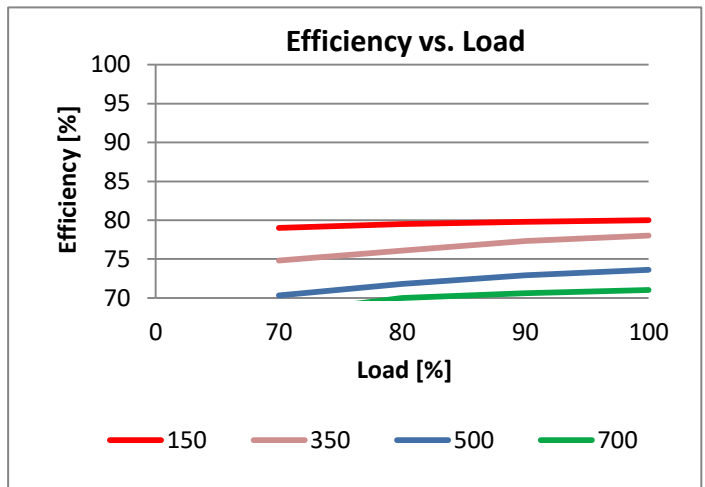
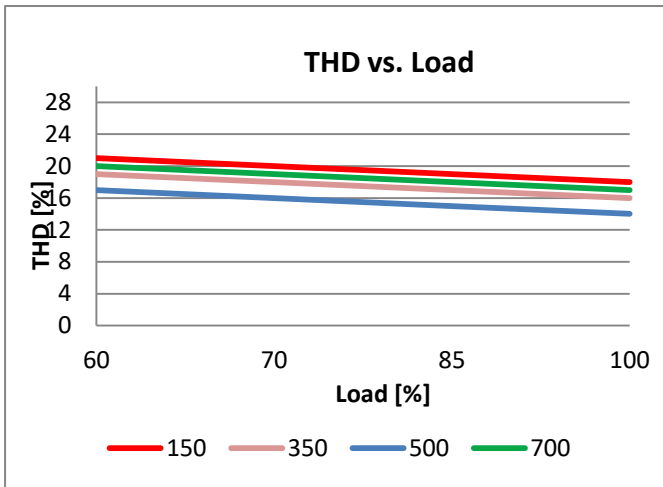
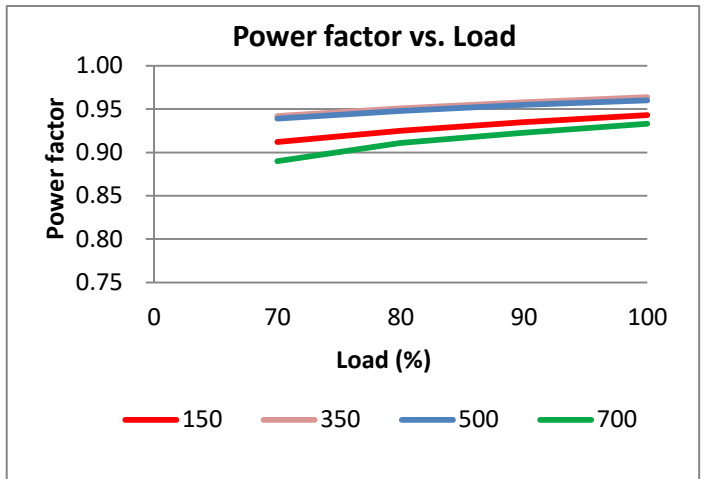
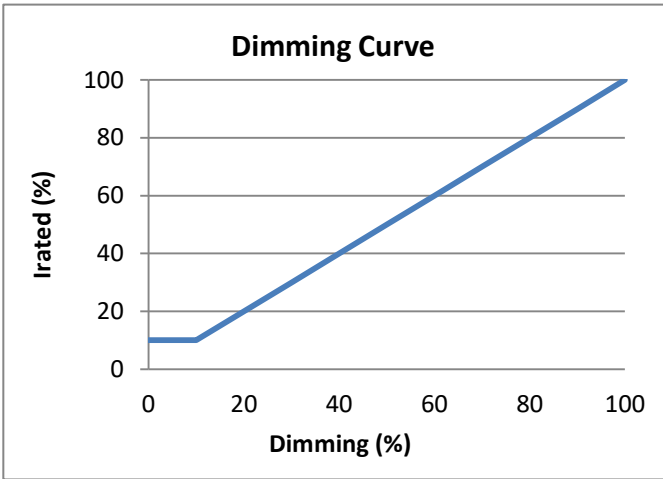
Subject to change without notice, HEP guarantees all products perform functionally well

* If not mentioned, all the test conditions are based on full load at 230VAC input (for 220-240 VAC input).

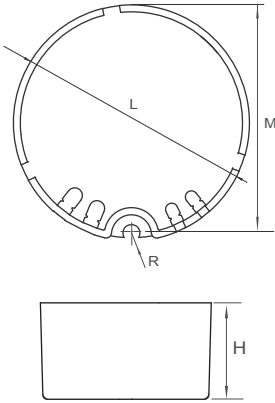
Trailing Edge Dimmer list approved by HEP

Manufacturer	Model	Qty of parallelconnection
Philips	SED-200A	14
Merten/Schneider	SBD315RC	23
Etman	ETM327	23
Etman	ETM329	23
Busch	6523 UR-103	30
Busch	6523 U-102	8
Niko	310-0190X	15
JUNG	LB-Management	10
Merten	SBD200LED(MEG5134-0000)	13
AU	P3	18
CASAMBI	CBU-TED	9

Electrical Values

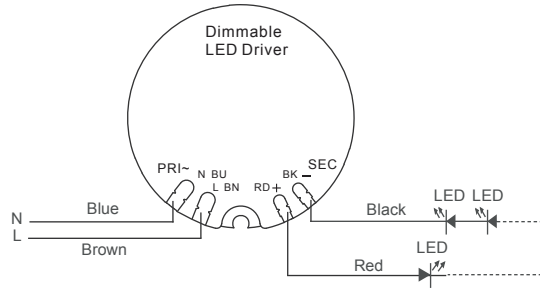


**Physical
Parameter**



L : 44.3 mm M : 42.8 mm
 H : 25 mm R : 1.6 mm
 Tolerance : +/-1 mm , R : +/-0.5 mm
 Housing Material : Polycarbonate / Potting
 Soldering : Lead-Free, Comply With RoHS
 Label : Surface Print

Wiring Diagram



TC location (Bottom)

