



| Item                                | Value            | Remark                                 |
|-------------------------------------|------------------|--|
| Nominal voltage                     | 220–240V         |  |
| Nominal frequency                   | 50–60Hz          |  |
| AC voltage range                    | 198–264V         |  |
| DC voltage range (start)            | NA               |  |
| DC voltage range (operation)        | NA               |  |
| Nominal current                     | 95mA             |  |
| Total Harmonic Distortion (THD)     |                  |  |
| G5LT15W300/350/500LR-Z              | < 15%            | Full load @230VAC                      |
| G5LT15W700LR-Z                      | < 18%            | Full load @230VAC                      |
| <b>Input</b> Power factor           | 0.9C             | Full load @230VAC                      |
| Displacement factor                 | 0.9C             | Full load @230VAC                      |
| Efficiency                          | 80% (Typ.)       | Full load @230VAC                      |
| No-load power                       | NA               |  |
| Stand-by power                      | NA               |  |
| Protection class                    | II               | Suitable for class I and II luminaires |
| Inrush current                      | 10A / 40us       |  |
| Max.units per circuit breaker       | Type B , 10A MCB | 42                                     |
|                                     | Type B , 16A MCB | 67                                     |
|                                     | Type C , 10A MCB | 53                                     |
|                                     | Type C , 16A MCB | 84                                     |
| Earth leakage current               | NA               |  |
| <b>Output</b> Nominal voltage range |                  |  |
| G5LT15W300LR-Z                      | 26-43Vdc         |  |
| G5LT15W350LR-Z                      | 26-43Vdc         |  |
| G5LT15W500LR-Z                      | 18-30Vdc         |  |
| G5LT15W700LR-Z                      | 13-21Vdc         |  |
| Maximum voltage                     |                  |  |
| G5LT15W300LR-Z                      | 60Vdc            |  |
| G5LT15W350LR-Z                      | 60Vdc            |  |
| G5LT15W500LR-Z                      | 45Vdc            |  |
| G5LT15W700LR-Z                      | 35Vdc            |  |

|                                   | Item   | Value   | Remark   |
|-----------------------------------|--|---|--|
| Output                            | Nominal current range                          |   |  |
|                                   | G5LT15W300LR-Z                                 | 300mA   |  |
|                                   | G5LT15W350LR-Z                                 | 350mA   |  |
|                                   | G5LT15W500LR-Z                                 | 500mA   |  |
|                                   | G5LT15W700LR-Z                                 | 700mA   |  |
|                                   | Current accuracy                               |   | Full load @230VAC  |
|                                   | G5LT15W300/350LR-Z                             | ± 6.5%  |  |
|                                   | G5LT15W500/700LR-Z                             | ± 5%  |  |
|                                   | Typical output LF current ripple               | ± 5%  | Low Frequency<120Hz  |
|                                   | Starting time                                  | < 0.5S  | Full load @230VAC  |
| SVM                               | ≤ 0.4  | Full load @230VAC   |  |
| P <sub>stLM</sub>                 | ≤ 1  | Full load @230VAC   |  |
| Output                            | Nominal power range                            |   |  |
|                                   | G5LT15W300LR-Z                                 | 7.8-12.9W   |  |
|                                   | G5LT15W350LR-Z                                 | 9.1-15W   |  |
|                                   | G5LT15W500LR-Z                                 | 9-15W   |  |
|                                   | G5LT15W700LR-Z                                 | 9.1-14.7W   |  |
| Maximum power                     | 15W  |   |  |
| Dimming                           | Dimming control                                | Trailing Edge   |  |
|                                   | Dimming technique                              | Amplitude   |  |
|                                   | PWM frequency                                  | NA  |  |
|                                   | Dimming range                                  | 10-100%   |  |
|                                   | Lowest dimming current                         | NA  |  |
|                                   | Galvanic isolation                             | NA  |  |
| Environment                       | Ambient temperature range t <sub>a</sub>       | -20°C - +50°C   |  |
|                                   | Maximum case temperature t <sub>c</sub>        | 90°C  | bottom   |
|                                   | Max. case temp. in fault condition             | 110°C   | When operating under fault conditions, the temperature of the enclosure at any location should not exceed 110 °C |
|                                   | Storage temperature range                      | -25°C - +85°C   |  |
|                                   | Relative humidity                              | 10% - 85%   |  |
|                                   | Surge transient protection                     | 1 kV  | L/N  |
|                                   | Environmental rating                           | Indoor  |  |
|                                   | IP rating                                      | IP20  |  |
|                                   | Mains switching cycles                         | > 100,000   |  |
|                                   | Expected lifetime                              | > 50,000 h, t <sub>c</sub> 90 °C @ t <sub>a</sub> 50 °C<br>> 100,000 h, t <sub>c</sub> 80 °C @ t <sub>a</sub> 40 °C | 0.2 % / 1,000 h failure rate   |
| Packing                           | Gross weight/Carton                            | 7.6 kg  |  |
|                                   | Net weight/Carton                              | 6.9 kg  |  |
|                                   | Pcs/Carton                                     | 100 PCS   |  |
|                                   | Dimension/Carton                               | 490(L)*270(W)*225(H)mm  |  |
| <b>Protections</b>                |  |   |  |
| Short-circuit Protection          | Auto recovery                                  |   |  |
| Open-circuit Protection           | Auto recovery                                  |   |  |
| Overload Protection               | Auto recovery                                  |   |  |
| <b>Conformity &amp; Standards</b> |  |   |  |
| Safety standard:                  | EN 61347-1, EN 61347-2-13, EN 62493            |   |  |
| Performance:                      | EN 62384                                       |   |  |
| EMC standard:                     | EN 55015, EN 61000-3-2, EN 61000-3-3, EN 61547 |   |  |
| CCC standard:                     | GB17625.1,GB/T17743,GB19510.1,GB19510.14       |   |  |

**Cable information****PRI**

|                      |  |
|----------------------|--|
| Cable cross-section  | 0.75-1.5□/AWG 18-16  |
| Stripping            | 6mm  |
| Pull test cable type | H03VV(H2)-F 2x0,75-1,5 mm <sup>2</sup> ,H05VV(H2)-F 2x0,75-1,5 mm <sup>2</sup> |

**SEC**

|                     |                    |
|---------------------|--------------------|
| Cable cross-section | 0.5-1.5□/AWG 20-16 |
| Stripping           | 6mm                |

**Terminal information****PRI-Screw type****SEC-Screw type**

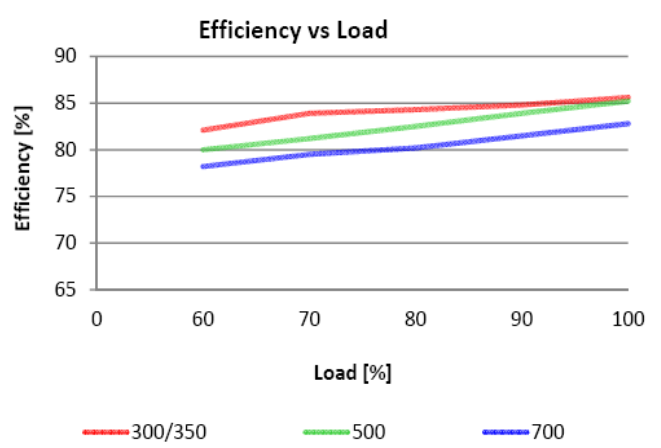
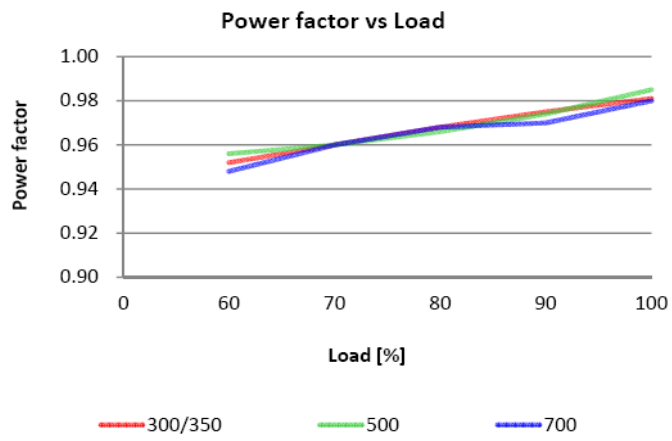
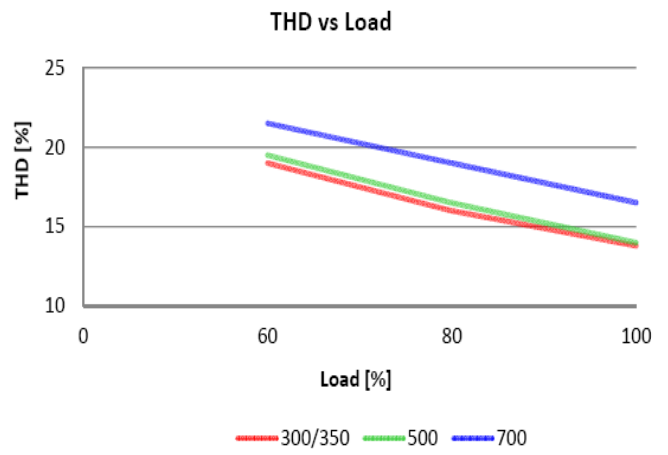
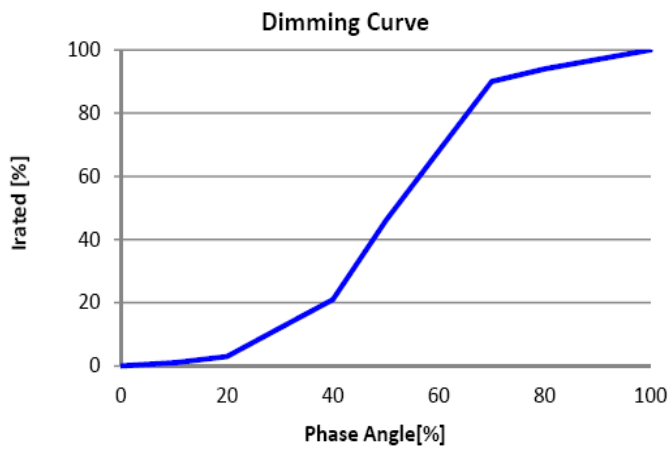
\* If not mentioned, all the test conditions are based on full load at 230VAC input (for 220-240 VAC input).

\*Subject to change without notice, HEP guarantees all products perform functionally well\*

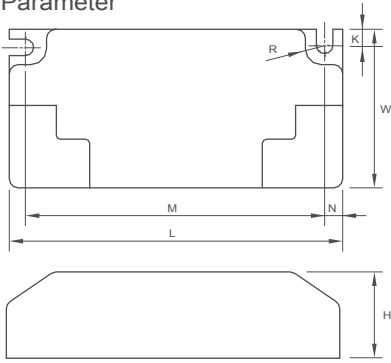
**Trailing Edge Dimmer list approved by HEP**

| Manufacturer | Model                   | Qty of parallelconnection |
|--------------|-------------------------|---------------------------|
| Schneider    | CCTSE12011              | 15                        |
| CLIPSAL      | 32E450UDM               | 20                        |
| HPM          | CAT400T                 | 20                        |
| Berker       | 2874                    | 25                        |
| Busch        | 6513U-102               | 20                        |
| JUNG         | 225 TDE                 | 25                        |
| Schneider    | SBD315RC                | 15                        |
| Etman        | ETM321P                 | 15                        |
| Etman        | ETM322P                 | 30                        |
| EGANT        | U327                    | 20                        |
| Busch        | 6523 UR-103             | 16                        |
| Busch        | 6523 U-102              | 16                        |
| Niko         | 310-0190X               | 8                         |
| JUNG         | LB-Management           | 4                         |
| Merten       | SBD200LED(MEG5134-0000) | 8                         |
| AU           | P3                      | 10                        |
| CASAMBI      | CBU-TED                 | 7                         |

# Electrical Values



**Physical Parameter**



L : 85 mm    H : 22 mm  
 M : 76.4 mm    K : 4.0 mm  
 N : 4.6 mm    R : 2.1 mm  
 W : 40.4 mm

Tolerance :  $\geq \pm 1$  mm

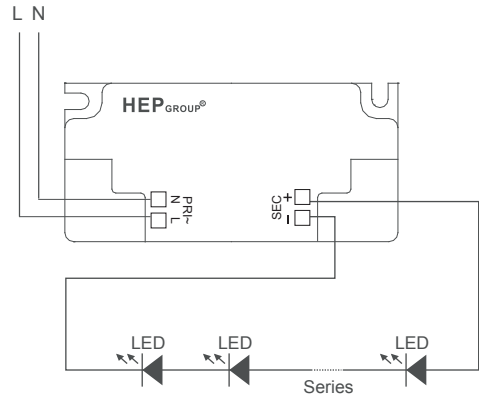
Terminal Block : PRI : Screw Type  
 SEC : Screw Type

Housing Material : Polycarbonate

Soldering : Lead-Free, Comply With RoHS

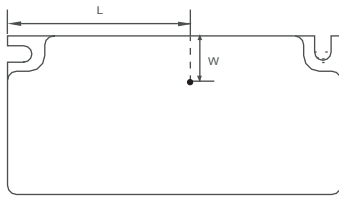
Label : Surface Print

**Wiring Diagram**



The length of wire from output to luminaire should be less than 2M

**TC point at bottom side of the case**



L : 50 mm    W : 10 mm