

Item	Value	Remark	
Nominal voltage	220–240V		
Nominal frequency	50–60Hz		
AC voltage range	198–264V		
DC voltage range (start)	NA		
DC voltage range (operation)	NA		
Nominal current	250mA		
Total Harmonic Distortion (THD)	< 10%	Full load @230VAC	
Power factor	0.9C	Full load @230VAC	
Displacement factor	0.9C	Full load @230VAC	
Efficiency	88%(Typ.)	Full load @230VAC	
No-load power	NA		
Networked standby power	< 0.3W		
Protection class	I	Suitable for class I and II luminaires	
Inrush current	30A / 25 us		
Max.units per circuit breaker	Type B , 10A MCB	16	
	Type B , 16A MCB	26	
	Type C , 10A MCB	20	
	Type C , 16A MCB	32	
Earth leakage current	NA		
Output	Nominal voltage range		
	350-900mA	20-50Vdc	
	950mA	20-46Vdc	
	1000mA	20-43Vdc	
	1050mA	20-40Vdc	
	Maximum voltage	52 Vdc	
	Output channels	2	
	Nominal current range	350-1050mA	DC Output with adjustable constant current from 350 to 1050 mA via NFC in 1mA steps Factory default 350mA
	Current accuracy	± 5%	Full load @230VAC
	Typical output LF current ripple	± 5%	Low Frequency< 120Hz Full load @230VAC
Starting time	< 1S	Full load @230VAC	
SVM	≤ 0.4	Full load @230VAC	

	Item	Value	Remark
Output	PstLM	≤ 1	Full load @230VAC
	Nominal power range	7-45W	
	Maximum power	47W	
	Color tuning range	1500K-10000K	Adjusted via NFC program Factory default 2000K-10000K
Dimming	Dimming control	DALI	Touch Dim
	Dimming range	1-100%	10-100%
	Lowest dimming current	0.5%-2%	7%-13%
	Dimming technique	Hybrid Dimming	O/P current ≥ 100 mA operated @ amplitude mode O/P current < 100 mA operated @ PWM mode
	PWM frequency	2KHz	
	Galvanic isolation	Basic insulated to PRI and double insulated to SEC	
Environment	Ambient temperature range t_a	-20°C - +50°C	
	Maximum case temperature t_c	80°C	
	Max. case temp. in fault condition	110°C	When operating under fault conditions, the temperature of the enclosure at any location should not exceed 110 °C
	Storage temperature range	-40°C - +85°C	
	Relative humidity	10% - 95%	
	Surge transient protection	1 kV,2 kV	L/N , L-PE/N-PE
	Environmental rating	Indoor	
	IP rating	IP20	
	Mains switching cycles	>100,000	
	Expected lifetime	> 50,000 h, t_c 80 °C @ t_a 50 °C > 100000 h, t_c 70 °C @ t_a 40 °C	0.2 % / 1,000 h failure rate 0.1 % / 1,000 h failure rate
Packing	Gross weight/box	12.7 kg	
	Net weight/box	11.7 kg	
	Pcs/box	50 PCS	
	Dimension/box	490(L)*270(W)*225(H)mm	
Protections			
	Short-circuit Protection	Auto recovery	
	Open-circuit Protection	Auto recovery	
	Overload Protection	Auto recovery	
Conformity & Standards			
	Safety standard:	EN 61347-1, EN 61347-2-13, EN 62493	
	Performance:	EN 62384	
	EMC standard:	EN 55015, EN 61000-3-2, EN 61000-3-3, EN 61547	
	DALI protocol standard:	EN 62386-101, EN 62386-102, EN 62386-207/DT6 EN 62386-209/DT8	

Cable information

PRI

Cable cross-section	0.5-1.5□/AWG 18-16
Stripping	9mm
Pull test cable type	H03VV(H2)-F 2x0,75-1,0 m□□

SEC

Cable cross-section	0.5-1.5□/AWG 18-16
Stripping	9mm

DALI

Cable cross-section	0.5-1.5□/AWG 18-16
Stripping	9mm

Terminal information

PRI-Push button

SEC-Push button

DALI-Push button

* If not mentioned, all the test conditions are based on full load at 230VAC input (for 220-240 VAC input).

Subject to change without notice, HEP guarantees all products perform functionally well

Optional product accessories

WBDA :



Wiring diagram :



BR-4K :



**For optional model, please check out its data sheet for details of specification.

APP(HEPxIDEA)

Working via WBDA freely control lights to dim up or down, tune warm or cool color by just using a smart phone.

ICON



Main



QR Code

Android



iOS

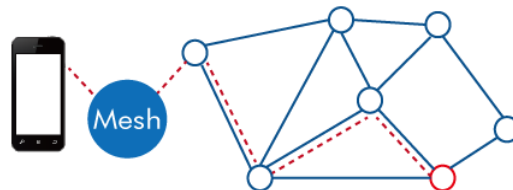


iOS Version :Android 5.0 Up, iOS 10.3 up 6.2

Features:

- 1.Mesh Network totally connecting up to 250 devices
- 2.All devices grouping to 16 groups maximumly
- 3.A group added in total of 30 devices
- 4.A device joined to 8 different groups overall
- 5.Timer preset 4 types of schedule onto individual device and groups as well
6. Maximum 5 scenes available to be determined

Mesh function:



Current adjustable

NFC Reader (optional)

Feature:

Easily on-line read a output current from a driver or write a new current data to a driver throughout HEP NFC reader within few seconds.



APP NFC

Feature:

Quickly check output current of a LED driver simply via Android smart phone, as well as, correct or setup a new current data immediately with no extra equipment at any job site.

ICON



Main



QR Code

Google play



APK

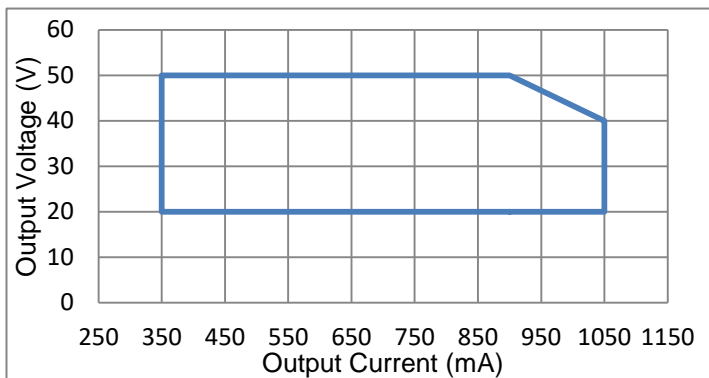


Android 6.0 Up

Smart phone with a NFC function

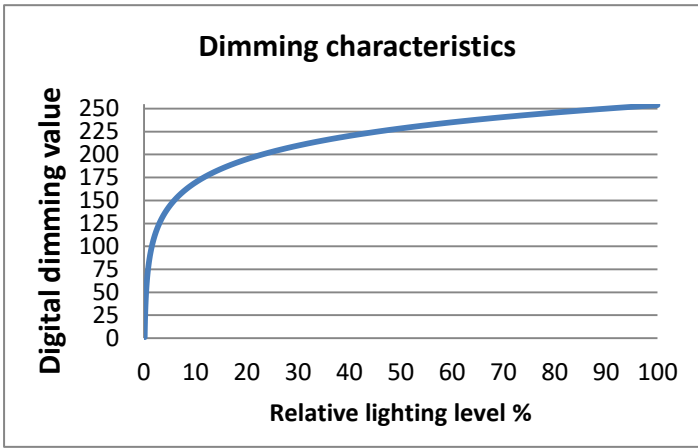
Electrical Values

Output Power Range



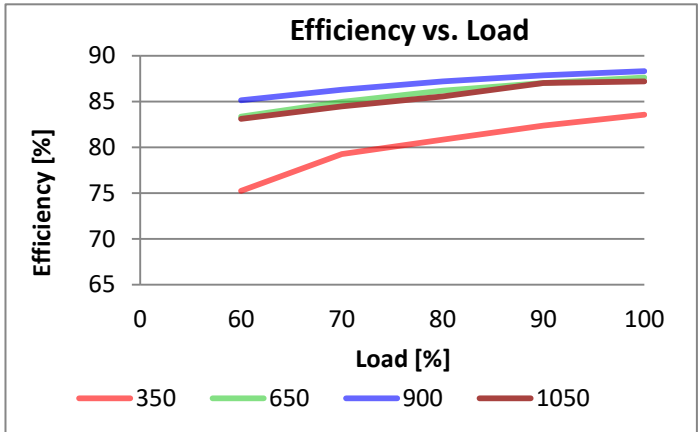
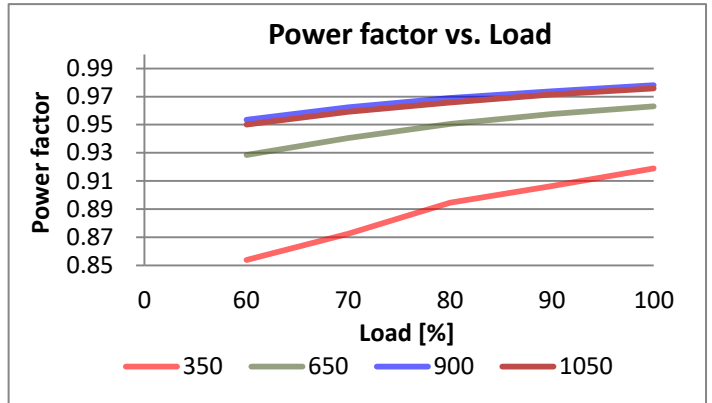
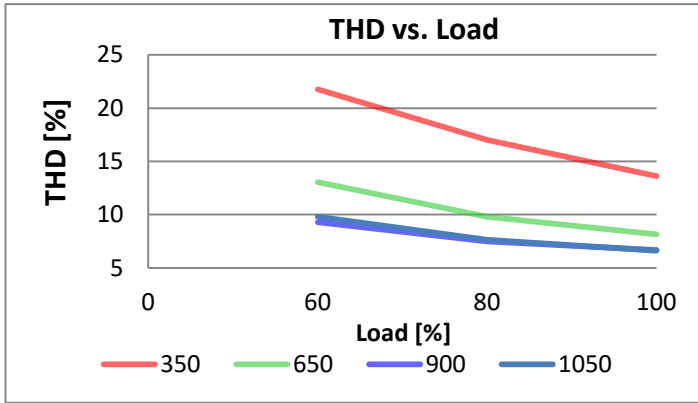
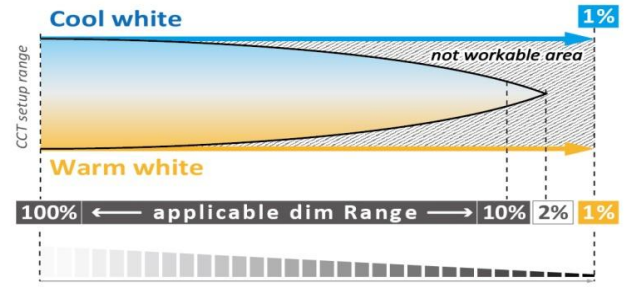
Output Current (mA)	Output Voltage Range (V)	Output Power Range (W)
1050	20-40	21.0-42.0
1000	20-43	20.0-43.0
950	20-46	19.0-43.7
900	20-50	18.0-45.0
850	20-50	17.0-42.5
800	20-50	16.0-40.0
750	20-50	15.0-37.5
700	20-50	14.0-35.0
650	20-50	13.0-32.5
600	20-50	12.0-30.0
550	20-50	11.0-27.5
500	20-50	10.0-25.0
450	20-50	9.0-22.5
400	20-50	8.0-20.0
350	20-50	7.0-17.5

* Upon client's special demand, customized current range in between 350 mA and 1050 mA could be specified as factory default from shipment. This default current range availably revised again via NFC reader program at client's site, if necessary.



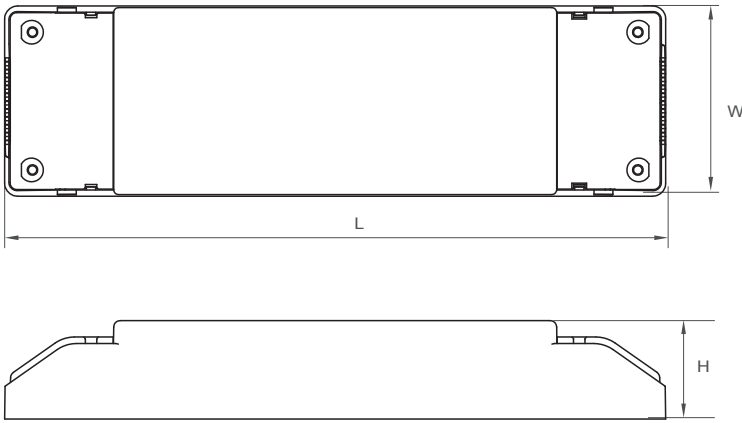
DALI-2 DT8 Control

Dimming up/down and CCT tuning are performed independently via DALI-2 DT8 dimmer.



Physical

Parameter



L : 201.6 mm W: 58 mm H : 30 mm

Slot On One Side Allowing Alignment : M+/-3 mm

Housing Material : Polycarbonate

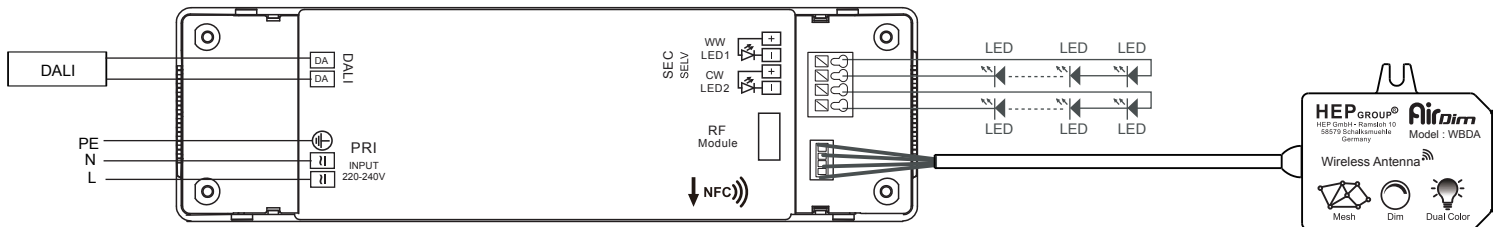
Soldering : Lead-Free, Comply With RoHS

Label : Surface Print

Wiring Diagram



Wiring Diagram with wireless module (optional)



NFC Antenna Location

