

Approval Marks



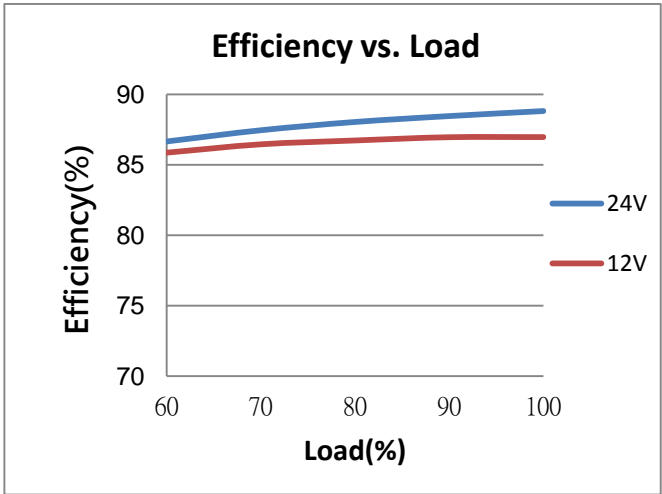
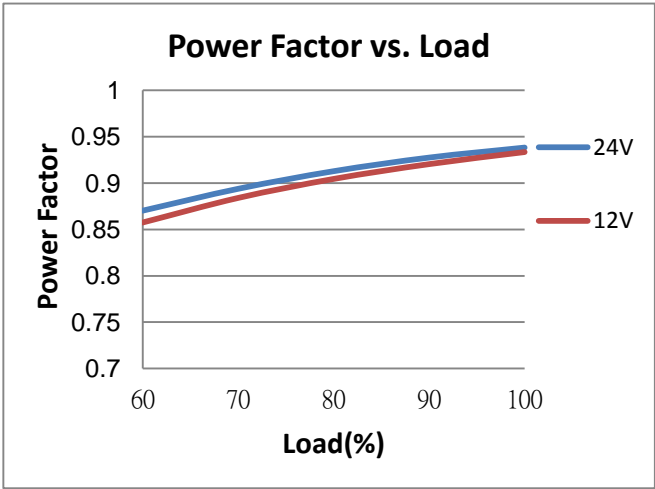
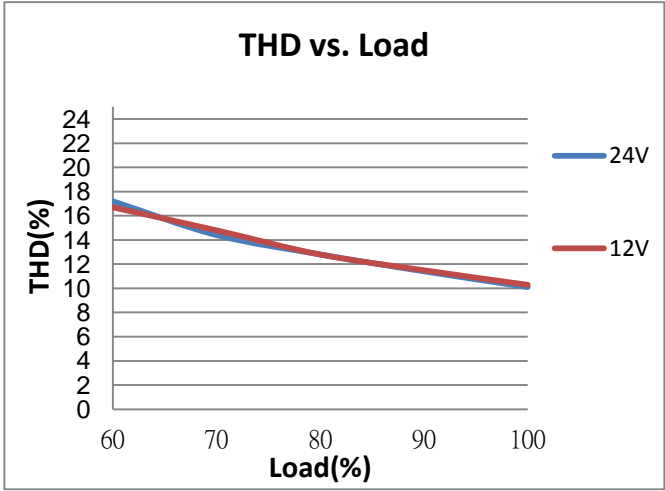
| Item | Value | Remark |
|---------------------------------|--------------|-------------------|
| Nominal voltage | 220–240V | |
| Nominal frequency | 50–60Hz | |
| AC voltage range | 198–264V | |
| DC voltage range (start) | NA | |
| DC voltage range (operation) | NA | |
| Nominal current | 100mA | Full load @230VAC |
| Total Harmonic Distortion (THD) | < 20% | Full load @230VAC |
| Power factor | 0.9C | Full load @230VAC |
| Displacement factor | 0.9C | Full load @230VAC |
| Efficiency | | |
| LRV15W24P | 88% (Typ.) | Full load @230VAC |
| LRV15W12P | 86% (Typ.) | Full load @230VAC |
| No-load power | NA | |
| Stand-by power | NA | |
| Protection class | NA | |
| Inrush current | 17 A / 40 us | |
| Earth leakage current | NA | |
| Nominal voltage range | | |
| LRV15W24P | 24Vdc | |
| LRV15W12P | 12Vdc | |
| Maximum voltage | | |
| LRV15W24P | 26Vdc | |
| LRV15W12P | 13Vdc | |
| Voltage accuracy | ± 5% | Full load @230VAC |
| Output LF voltage ripple | | < 120Hz |
| LRV15W24P | ± 6% | |
| LRV15W12P | ± 8% | |
| SVM | ≤ 0.4 | Full load @230VAC |
| PstLM | ≤ 1 | Full load @230VAC |
| Starting time | < 0.5 S | Full load @230VAC |
| Nominal power range | 0-15W | |
| Nominal current range | | |
| LRV15W24P | 50-625mA | |
| LRV15W12P | 50-1250mA | |

| | Item | Value | Remark |
|--|--|---------------------------------------|--|
| Dimming | Dimming control | NA | |
| | Dimming technique | NA | |
| | PWM frequency | NA | |
| | Dimming range | NA | |
| | Lowest dimming current | NA | |
| | Galvanic isolation | NA | |
| Environment | Ambient temperature range t_a | -20°C - +50°C | |
| | Maximum case temperature t_c | 75°C | |
| | Max. case temp. in fault condition | 110°C | When operating under fault conditions, the temperature of the enclosure at any location should not exceed 110 °C |
| | Storage temperature range | -40°C - +85°C | |
| | Relative humidity | 10% - 95% | |
| | Surge transient protection | 1 kV | L/N |
| | Environmental rating | Indoor | |
| | IP rating | IP20 | |
| | Mains switching cycles | > 100,000 | |
| | Expected lifetime | | |
| | LRV15W12P | | |
| | Full Load | > 50,000 h, t_c 75 °C @ t_a 50 °C | 0.2 % / 1,000 h failure rate |
| | Output load \leq 8.3W | > 50,000 h, t_c 75 °C @ t_a 60 °C | 0.2 % / 1,000 h failure rate |
| | LRV15W24P | | |
| Full Load | > 50,000 h, t_c 75 °C @ t_a 50 °C | 0.2 % / 1,000 h failure rate | |
| Output load \leq 7W | > 50,000 h, t_c 75 °C @ t_a 60 °C | 0.2 % / 1,000 h failure rate | |
| Packing | Gross weight/box | kg | |
| | Net weight/box | kg | |
| | Pcs/box | 132 PCS | |
| | Dimension/box | 490 (L)*270 (W)*225 (H)mm | |
| Protections | | | |
| Short- & open circuit proof, Auto, Overload protection | | | |
| Conformity & Standards | | | |
| Safety standard: | EN 61347-1, EN 61347-2-13, EN 62493 | | |
| Performance: | EN 62384 | | |
| EMC standard: | EN 55015, EN 61000-3-2, EN 61000-3-3, EN 61547 | | |
| Cable information | | | |
| PRI Connection | L | N | |
| Color | Brown | Blue | |
| Wire type | 7022 | 7022 | |
| Wire diameter | AWG20 | AWG20 | |
| Wire length | 142mm | 142mm | |
| Stripping | 6mm | 6mm | |
| Tolerance | \pm 5mm | \pm 5mm | |
| Sec Connection | + | - | |
| Color | Red | Black | |
| Wire type | 1332 | 1332 | |
| Wire diameter | AWG22 | AWG22 | |
| Wire length | 142mm | 142mm | |
| Strip length | 6mm | 6mm | |
| Tolerance | \pm 5mm | \pm 5mm | |

Subject to change without notice, HEP guarantees all products perform functionally well

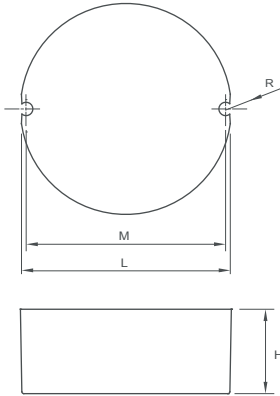
* If not mentioned, all the test conditions are based on full load at 230VAC input (for 220-240 VAC input).

Electrical Values @230vAC



Physical

Parameter



L : 55 mm H : 22 mm
M : 52 mm R : 1.75 mm

Tolerance : +/-1 mm , R : +/-0.5 mm

Slot On One Side Allowing Alignment : M+/-3 mm

Housing Material : Polycarbonate

Soldering : Lead-Free, Comply With RoHS

Label : Surface Print

Wiring Diagram

