

Item	Value	Remark
Nominal voltage	220–240V	
Nominal frequency	50–60Hz	
AC voltage range	198–264V	
DC voltage range (start)	NA	
DC voltage range (operation)	NA	
Nominal current		
LNDC20W300LRP	105mA	
LNDC20W350LRP	120mA	
LNDC20W400LRP	95mA	
LNDC20W450LRP	110mA	
LNDC20W500LRP	120mA	
LNDC20W550LRP	100mA	
LNDC20W600LRP	105mA	
LNDC20W700LRP	125mA	
Total Harmonic Distortion (THD)	< 25%	Full load @230VAC
Power factor		Full load @230VAC
Input	LNDC20W300/350/550/600LRP	0.87-0.94C
	LNDC20W400LRP	0.85-0.92C
	LNDC20W450LRP	0.88-0.94C
	LNDC20W500LRP	0.9C-0.96
	LNDC20W700LRP	0.86-0.94C
Displacement factor		Full load @230VAC
LNDC20W300/350/550/600LRP	0.87-0.94C	
LNDC20W400LRP	0.85-0.92C	
LNDC20W450LRP	0.88-0.94C	
LNDC20W500LRP	0.9C-0.96	
LNDC20W700LRP	0.86-0.94C	
Efficiency	80% (Typ.)	Full load @230VAC
No-load power	NA	
Stand-by power	< 0.5W	
Protection class	NA	
Inrush current	10 A / 30 us	
Max.units per circuit breaker	Type B , 10A MCB	32
	Type B , 16A MCB	51
	Type C , 10A MCB	40
	Type C , 16A MCB	64
Earth leakage current	NA	

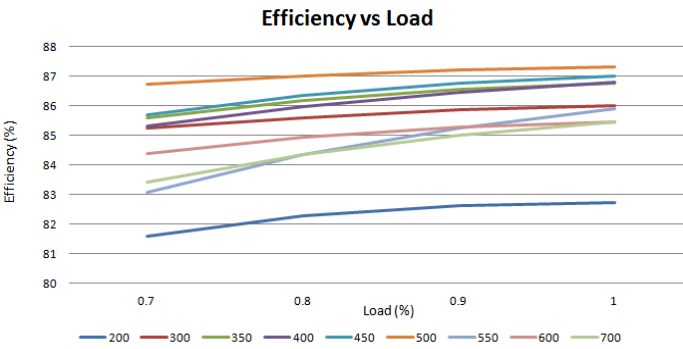
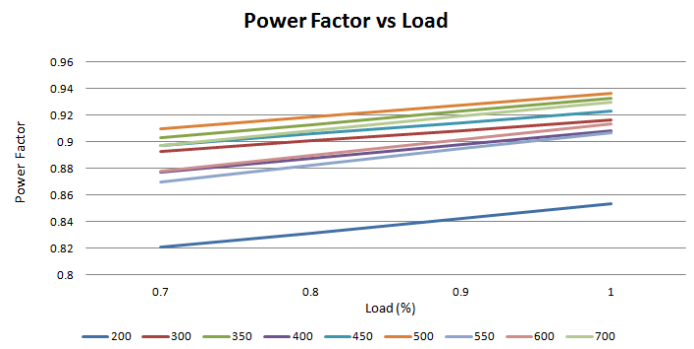
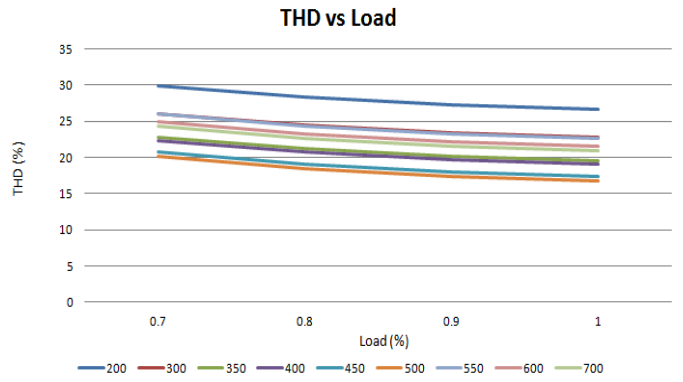
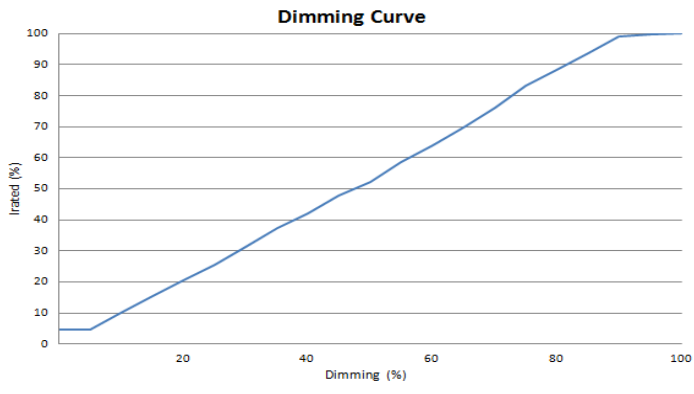
	Item	Value	Remark
Output	Nominal voltage range		
	LNDC20W300/350LRP	40-58 Vdc	
	LNDC20W400/450/500LRP	28-40 Vdc	
	LNDC20W550/600/700LRP	20-29 Vdc	
	Maximum voltage		
	LNDC20W200/300/350LRP	65Vdc	
	LNDC20W400/450/500LRP	52Vdc	
	LNDC20W550/600/700LRP	37Vdc	
	Nominal current range		
	LNDC20W300LRP	300mA	
LNDC20W350LRP	350mA		
LNDC20W400LRP	400mA		
LNDC20W450LRP	450mA		
LNDC20W500LRP	500mA		
LNDC20W550LRP	550mA		
LNDC20W600LRP	600mA		
LNDC20W700LRP	700mA		
Current accuracy	± 5%	Full load @230VAC	
Typical output LF current ripple	± 5%	Low Frequency< 120Hz Full load @230VAC	
Starting time	< 0.5 S	Full load @230VAC	
Nominal power range			
LNDC20W300LRP	12.0-17.4W		
LNDC20W350LRP	14.0-20.3W		
LNDC20W400LRP	11.2-16.0W		
LNDC20W450LRP	12.6-18.0W		
LNDC20W500LRP	14.0-20.0W		
LNDC20W550LRP	11.0-15.9W		
LNDC20W600LRP	12.0-17.4W		
LNDC20W700LRP	14.0-20.3W		
Maximum power	20W		
Dimming	Dimming control	DALI/Touch Dim	
	Dimming technique	Amplitude	
	PWM frequency	NA	
	Dimming range	5-100%	
	Lowest dimming current	4-8%	
Galvanic isolation	Basic insulated to PRI and double insulated to SEC		
Environment	Ambient temperature range t_a	-20°C - +50°C	
	Maximum case temperature t_c		$t_a = 50\text{ °C}$
	LNDC20W300/350LRP	75°C	
	LNDC20W400/450/500LRP	70°C	
	LNDC20W550/600/700LRP	75°C	
	Max. case temp. in fault condition	110°C	When operating under fault conditions, the temperature of the enclosure at any location should not exceed 110 °C
	Storage temperature range	-40°C - +85°C	
	Relative humidity	10% - 95%	
Surge transient protection	1 kV	L/N	
Environmental rating	Indoor		
IP rating	IP20		

Item	Value	Remark	
Mains switching cycles	> 100,000		
Environment	Expected lifetime		
	LNDC20W300/350LRP	> 50,000 h, tc 75 °C @ ta 50 °C >100000 h, tc 65 °C @ ta 40 °C	0.2 % / 1,000 h failure rate @ tc 75 °C 0.1 % / 1,000 h failure rate @ tc 65 °C
	LNDC20W400/450/500LRP	> 50,000 h, tc 70 °C @ ta 50 °C >100000 h, tc 60 °C @ ta 40 °C	0.2 % / 1,000 h failure rate @ tc 80 °C 0.1 % / 1,000 h failure rate @ tc 70 °C
	LNDC20W550/600/700LRP	> 50,000 h, tc 75 °C @ ta 50 °C >100000 h, tc 65 °C @ ta 40 °C	0.2 % / 1,000 h failure rate @ tc 75 °C 0.1 % / 1,000 h failure rate @ tc 65 °C
Packing	Gross weight/Carton	10.1 kg	
	Net weight/Carton	9 kg	
	Pcs/Carton	72 PCS	
	Dimension/Carton	490(L)*270(W)*225(H)mm	
Protections			
Short-circuit Protection	Auto recovery		
Open-circuit Protection	Auto recovery		
Overload Protection	Auto recovery		
Conformity & Standards			
Safety standard:	EN 61347-1, EN 61347-2-13, EN 62493		
Performance:	EN 62384		
SAA standard:	AS/NZS 61347.1, AS/NZS IEC 61347.2.13		
CCC standard:	GB17625.1,GB/T17743,GB19510.1,GB19510.14		
EMC standard:	EN 55015, EN 61000-3-2, EN 61000-3-3, EN 61547		
DALI protocol standard:	EN 62386-101, EN 62386-102, EN 62386-207		
Cable information			
PRI Connection	L	N	
Color	Brown	Blue	
Wire type	7022	7022	
Wire diameter	AWG18	AWG18	
Wire length	130mm	128mm	
Stripping	6mm	6mm	
Tolerance	±5mm	±5mm	
Sec Connection	+	-	
Color	Red	Black	
Wire type	1332	1332	
Wire diameter	AWG22	AWG22	
Wire length	141mm	138mm	
Strip length	6mm	6mm	
Tolerance	±5mm	±5mm	
DALI/Touch Dim Connection	DA	DA	
Color	Purple	Gray	
Wire type	7022	7022	
Wire diameter	AWG20	AWG20	
Wire length	141mm	141mm	
Stripping	10mm	10mm	
Tolerance	±5mm	±5mm	

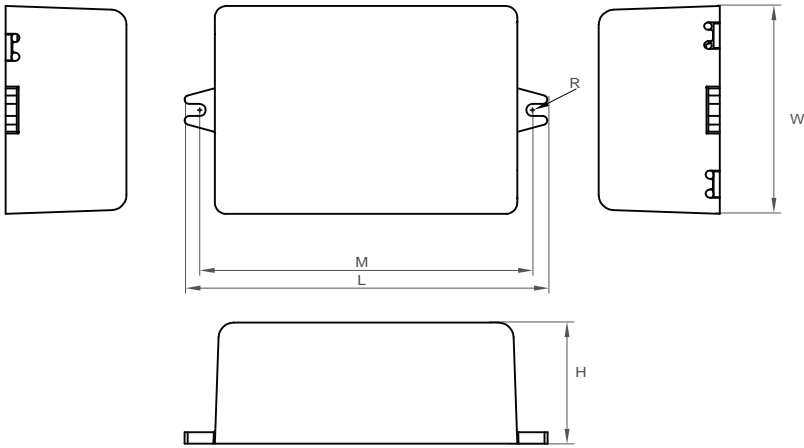
Subject to change without notice, HEP guarantees all products perform functionally well

* If not mentioned, all the test conditions are based on full load at 230VAC input (for 220-240 VAC input).

Electrical Values



**Physical
Parameter**



L : 88 mm M : 80.3 mm R : 1.6 mm

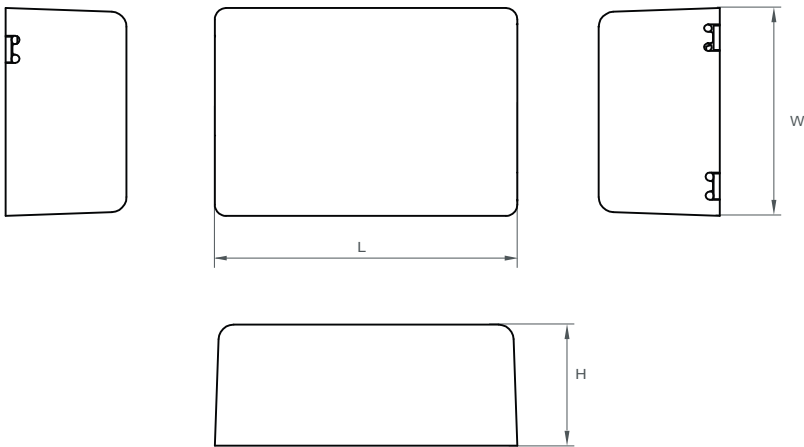
W : 45 mm H : 25 mm

Tolerance : +/-1 mm , R : +/-0.5 mm

Housing Material : Polycarbonate

Soldering : Lead-Free, Comply With RoHS

Label : Surface Print



L : 73 mm H : 25 mm

W : 45 mm

Tolerance : +/-1 mm

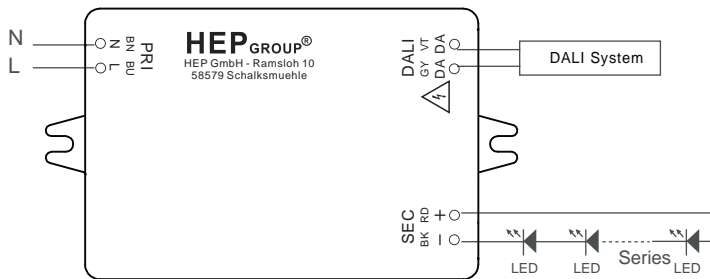
Housing Material : Polycarbonate

Soldering : Lead-Free, Comply With RoHS

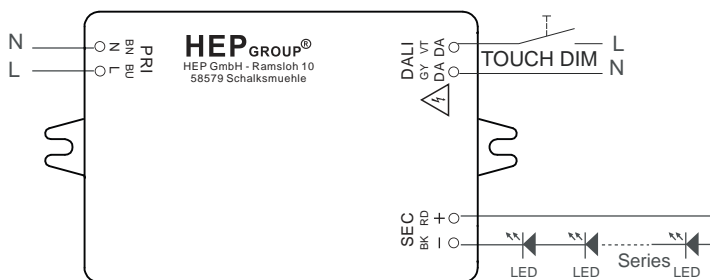
Label : Surface Print

Wiring Diagram

DALI



TOUCH DIM



* Touch Dim

Short push (<0.6sec.) Push to turn ON-OFF
 Long push (>0.6sec.) Dimming up or down

Synchronization of Touch DIM

If a large number of driver with Touch Dim is operated in a system there is a chance that an driver will operate out of synchronization with the others(= different dimming level setting or different switching state).

Synchronism can be restored as follows:

- 1.Step: Long push all the lamps are switched on
- 2.Step: Short push all the lamps are switched off
- 3.Step: Long push all the lamps are switched on the minimum dimming setting of the drivers and continuously fade up to the desired dimming level, then release push bottom.

Max. lead length : 20 M

Max. parallel units : 15 pcs