

Item	Value	Remark
Nominal voltage	220–240V	
Nominal frequency	50–60Hz	
AC voltage range	198–264V	
DC voltage range (start)	NA	
DC voltage range (operation)	NA	
Nominal current	250mA	
Total Harmonic Distortion (THD)	< 10%	Full load @230VAC
Power factor	0.7C-0.97	Full load @230VAC
Displacement factor	0.7C-0.97	Full load @230VAC
Efficiency	88% (Typ.)	Full load @230VAC
No-load power	NA	
Stand-by power	< 0.3W	@230VAC
Protection class	NA	
Inrush current	16.5A / 20 us	Cold boot 220VAC (0-100% Ipeak)
Max.units per circuit breaker	Type B , 10A MCB	16
	Type B , 16A MCB	26
	Type C , 10A MCB	20
	Type C , 16A MCB	32
Earth leakage current	NA	
Nominal voltage range	20-50 Vdc	
Maximum voltage	52 Vdc	
Nominal current range	350-1050mA	DC Output with adjustable constant current from 350 to 1050 mA via NFC in 1mA steps Factory default 350mA
Current accuracy	± 5%	Full load @230VAC
Typical output LF current ripple	± 5%	Low Frequency< 120Hz Full load @230VAC
Starting time	< 0.5 S	Full load @230VAC
Nominal power range	7-45W	
Maximum power	47W	
Color tuning range	1500K-10000K	Adjusted via NFC program Factory default 2000K-10000K

	Item	Value	Remark
<b>Dimming</b>	Dimming control	DALI , Bluetooth	Touch Dim
	Dimming range	1-100%	10-100%
	Lowest dimming current	0.5%-2%	7%-13%
	Dimming technique	Hybrid Dimming	O/P current ≥ 100 mA operated @ amplitude mode O/P current < 100 mA operated @ PWM mode
	PWM frequency	2KHz	
	Galvanic isolation	Basic insulated to PRI and double insulated to SEC	
<b>Environment</b>	Ambient temperature range t <sub>a</sub>	-20°C - +50°C	
	Maximum case temperature t <sub>c</sub>	80°C	
	Max. case temp. in fault condition	110°C	When operating under fault conditions, the temperature of the enclosure at any location should not exceed 110 °C
	Storage temperature range	-40°C - +85°C	
	Relative humidity	10% - 95%	
	Surge transient protection	1kV / 2kV	L-N/L-PE,N-PE
	Environmental rating	Indoor	
	IP rating	IP20	
	Mains switching cycles	> 100,000	
	Expected lifetime	> 50,000 h, t <sub>c</sub> 80 °C @ t <sub>a</sub> 50 °C > 100,000 h, t <sub>c</sub> 70 °C @ t <sub>a</sub> 40 °C	0.2 % / 1,000 h failure rate 0.1 % / 1,000 h failure rate
	<b>Packing</b>	Gross weight/box	15.4 kg
Net weight/box		14.2 kg	
Pcs/box		48 PCS	
Dimension/box		415(L)*255(W)*255(H)mm	
<b>Protections</b>			
Short-circuit Protection	Auto recovery		
Open-circuit Protection	Auto recovery		
Overload Protection	Auto recovery		
<b>Conformity &amp; Standards</b>			
Safety standard:	EN 61347-1, EN 61347-2-13, EN 62493		
Performance:	EN 62384		
EMC standard:	EN 55015, EN 61000-3-2, EN 61000-3-3, EN 61547		
DALI protocol standard:	EN 62386-101, EN 62386-102, EN 62386-207, EN 62386-209		
<b>Cable information</b>			
<b>PRI</b>			
Cable cross-section	0.5-1.5□/AWG 20-16		
Stripping	9mm		
<b>SEC</b>			
Cable cross-section	0.5-1.5□/AWG 20-16		
Stripping	9mm		
<b>DALI</b>			
Cable cross-section	0.5-1.5□/AWG 20-16		
Stripping	9mm		
<b>Terminal information</b>			
<b>PRI</b> -Push button/Angled Entry			
<b>SEC</b> -Push button/Angled Entry			
<b>DALI</b> -Push button/Angled Entry			

\* If not mentioned, all the test conditions are based on full load at 230VAC input (for 220-240 VAC input).

\*Subject to change without notice, HEP guarantees all products perform functionally well\*

## Optional product accessories

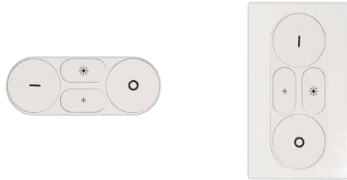
WBDA :



Wiring diagram :



BR-4K :



\*\*For optional model, please check out its data sheet for details of specification.

### APP( HEPxIDEA )

Working via WBDA freely control lights to dim up or down, tune warm or cool color by just using a smart phone.

ICON



Main



QR Code

Android



iOS

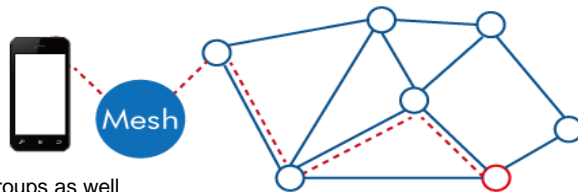


iOS Version :Android 5.0 Up, iOS 10.3 up 6.2

Features:

- 1.Mesh Network totally connecting up to 250 devices
- 2.All devices grouping to 16 groups maximumly
- 3.A group added in total of 30 devices
- 4.A device joined to 8 different groups overall
- 5.Timer preset 4 types of schedule onto individual device and groups as well
6. Maximum 5 scenes available to be determined

Mesh function:

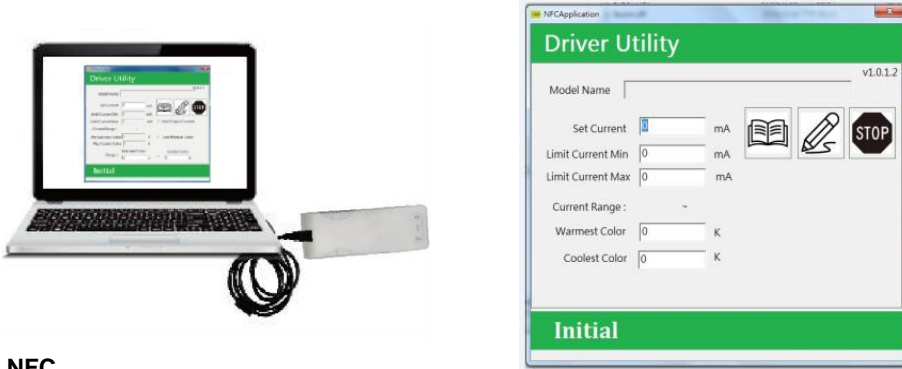


**Current adjustable**

**NFC Reader (optional)**

Feature:

Easily on-line read a output current from a driver or write a new current data to a driver throughout HEP NFC reader within few seconds.



**APP NFC**

Feature:

Quickly check output current of a LED driver simply via Android smart phone, as well as, correct or setup a new current data immediately with no extra equipment at any job site.

**ICON**



**Main**



**QR Code**

Google play

APK

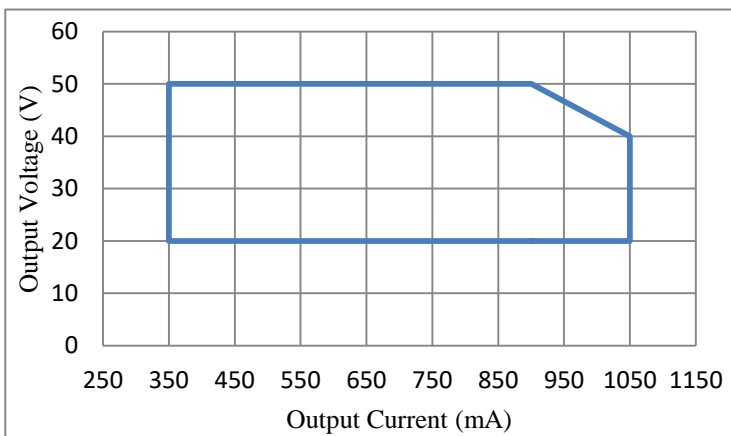


Android 6.0 Up

Smart phone with a NFC function

**Electrical Values**

Output Power Range



Output Current (mA)	Output Voltage Range (V)	Output Power Range (W)
1050	20-40	21.0-42.0
1000	20-43	20.0-43.0
950	20-46	19.0-43.7
900	20-50	18.0-45.0
850	20-50	17.0-42.5
800	20-50	16.0-40.0
750	20-50	15.0-37.5
700	20-50	14.0-35.0
650	20-50	13.0-32.5
600	20-50	12.0-30.0
550	20-50	11.0-27.5
500	20-50	10.0-25.0
450	20-50	9.0-22.5
400	20-50	8.0-20.0
350	20-50	7.0-17.5

\* Upon client's special demand, customized current range in between 350 mA and 1050 mA could be specified as factory default from shipment. This default current range available revised again via NFC reader program at client's site, if necessary.

