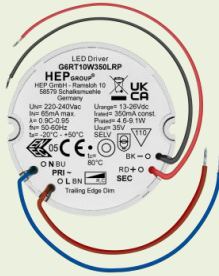


Approval Marks



Item	Value	Remark
Nominal voltage	220–240V	
Nominal frequency	50–60Hz	
AC voltage range	198–264V	
DC voltage range (start)	NA	
DC voltage range (operation)	NA	
Nominal current	65mA	Full load @230VAC
Total Harmonic Distortion (THD)	< 20%	Full load @230VAC
Power factor	0.9C-0.95	Full load @230VAC
Displacement factor	0.9C-0.95	Full load @230VAC
Efficiency		Full load @230VAC
Input	G6RT10W200LRP	84%(Typ.)
	G6RT10W250LRP	84%(Typ.)
	G6RT10W350LRP	81%(Typ.)
	G6RT10W500LRP	80%(Typ.)
	G6RT10W700LRP	77%(Typ.)
No-load power	NA	
Stand-by power	NA	
Protection class	NA	
Inrush current	8.5A / 60us	
Max. units per circuit breaker	Type B , 10A MCB	62
	Type B , 16A MCB	98
	Type C , 10A MCB	77
	Type C , 16A MCB	123
Earth leakage current	NA	
Output	Nominal voltage range	
	G6RT10W200/250LRP	30-42Vdc
	G6RT10W350LRP	13-26Vdc
	G6RT10W500LRP	12-20Vdc
	G6RT10W700LRP	8.6-12.9Vdc
Maximum voltage		
G6RT10W200/250LRP	55Vdc	
G6RT10W350LRP	35Vdc	

	Item	Value	Remark	
	G6RT10W500LRP	27Vdc		
	G6RT10W700LRP	25Vdc		
	Nominal current range			
	G6RT10W200LRP	200mA		
	G6RT10W250LRP	250mA		
	G6RT10W350LRP	350mA		
	G6RT10W500LRP	500mA		
	G6RT10W700LRP	700mA		
Output	Current accuracy	± 5%	Full load @230VAC	
	Typical output LF current ripple	± 5%	Low Frequency< 120Hz Full load @230VAC	
	Starting time	< 0.5 S	Full load @230VAC	
	SVM	≤0.4	Full load @230VAC	
	P _{stLM}	≤1	Full load @230VAC	
	Nominal power range			
	G6RT10W200LRP	6-8.4W		
	G6RT10W250LRP	7.5-10.5W		
	G6RT10W350LRP	4.6-9.1W		
	G6RT10W500LRP	6-10W		
	G6RT10W700LRP	6-9W		
	Maximum power	10.5W		
Dimming	Dimming control	Trailing edge		
	Dimming range	10-100%		
	Lowest dimming current	2-6%		
	Dimming technique	Amplitude		
	PWM frequency	NA		
	Galvanic isolation	NA		
	Ambient temperature range t _a	-20°C - +50°C		
	Maximum case temperature t _c			
	G6RT10W200LRP	70°C		
	G6RT10W250LRP	75°C		
	G6RT10W350/500/700LRP	80°C		
	Max. case temp. in fault condition	110°C	When operating under fault conditions, the temperature of the enclosure at any location should not exceed 110 °C	
	Storage temperature range	-40°C - +85°C		
Environment	Relative humidity	10% - 90%		
	Surge transient protection	1 kV	L/N	
	Environmental rating	Indoor		
	IP rating	IP20		
	Mains switching cycles	> 100,000		
	Expected lifetime			
	G6RT10W200LRP	Full load	> 50,000 h, t _c 70 °C @ t _a 50 °C	0.2 % / 1,000 h failure rate
		Output load ≤ 7W	> 48,000 h, t _c 70 °C @ t _a 60 °C	0.21 % / 1,000 h failure rate
	G6RT10W250LRP	Full load	> 50,000 h, t _c 75 °C @ t _a 50 °C	0.2 % / 1,000 h failure rate
		Output load ≤ 7W	> 48,000 h, t _c 75 °C @ t _a 60 °C	0.21 % / 1,000 h failure rate
	G6RT10W350/500/700LRP	Full load	> 50,000 h, t _c 80 °C @ t _a 50 °C	0.2 % / 1,000 h failure rate
		Output load ≤ 7W	> 48,000 h, t _c 80 °C @ t _a 60 °C	0.21 % / 1,000 h failure rate
Packing	Gross weight/Carton	14.6 kg		
	Net weight/Carton	13.5 kg		
	Pcs/Carton	180 PCS		
	Dimension/Carton	385(L)*310(W)*260(H)mm		

Protections

Short-circuit Protection	Auto recovery
Open-circuit Protection	Auto recovery
Overload Protection	Auto recovery

Conformity & Standards

Safety standard:	EN 61347-1, EN 61347-2-13, EN 62493
Performance:	EN 62384
EMC standard:	EN 55015, EN 61000-3-2, EN 61000-3-3, EN 61547

Cable information

PRI Connection	L	N
Color	Brown	Blue
Wire type	7022	7022
Wire diameter	AWG20	AWG20
Wire length	140mm	140mm
Stripping	6mm	6mm
Tolerance	±5mm	±5mm

SEC Connection	+	-
Color	Red	Black
Wire type	1332	1332
Wire diameter	AWG22	AWG22
Wire length	139mm	139mm
Stripping	6mm	6mm
Tolerance	±5mm	±5mm

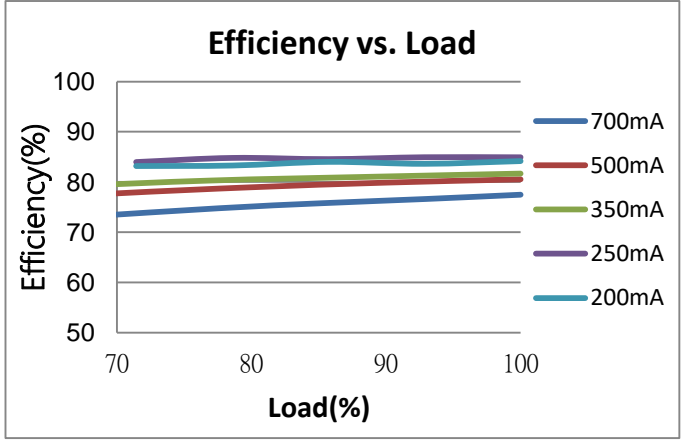
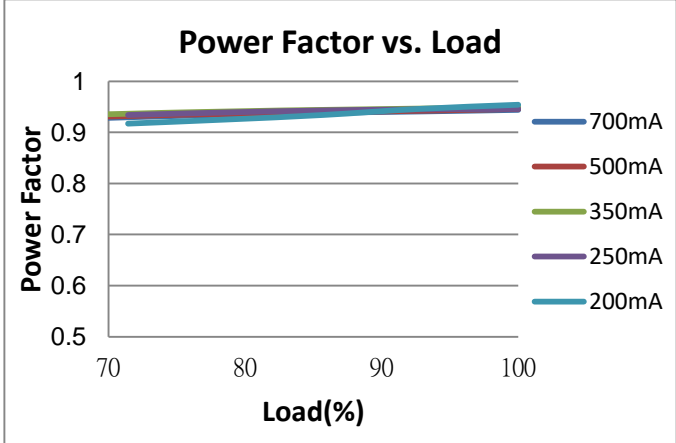
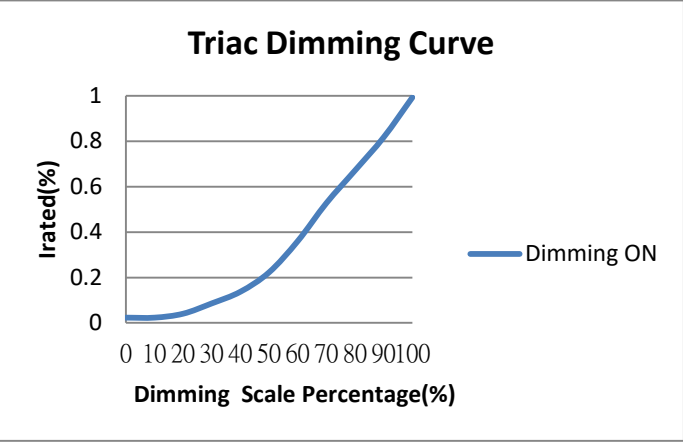
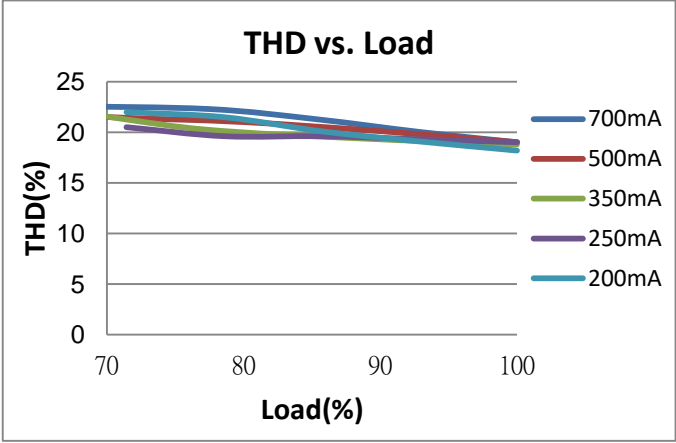
Subject to change without notice, HEP guarantees all products perform functionally well

* If not mentioned, all the test conditions are based on full load at 230VAC input (for 220-240 VAC input).

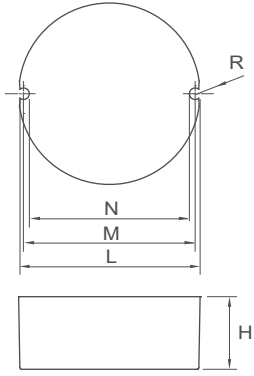
Trailing Edge Dimmer list approved by HEP

Manufacturer	Model	Q'ty of parallelconnection
Philips	SED-200A	13
Merten/Schneider	SBD315RC	18
Etman	ETM327	20
Etman	ETM329	20
Merten	SBD200LED	20
AU	P3	18
Busch	6513 U-102	20
Busch	6523 UR-103	20
Busch	6523 U-102	14
Niko	310-0190X	18
JUNG	LB-Management	20
CASAMBI	CBU-TED	8

Electrical Values



**Physical
Parameter**



L : 48 mm M : 46.7 mm N : 43.5 mm

H : 25 mm R : 1.6 mm

Tolerance : +/-1 mm , R : +/-0.5 mm

Housing Material : Polycarbonate / Potting

Soldering : Lead-Free, Comply With RoHS

Label : Surface Print

Wiring Diagram

