

Item	Value	Remark
Nominal voltage	220–240V	
Nominal frequency	0 / 50–60Hz	
AC voltage range	198–264V	
DC voltage range (start)	NA	
DC voltage range (operation)	NA	
Nominal current		
G5RT30W600LRP	150mA	
G5RT30W700LRP	170mA	
G5RT30W800LRP	190mA	
Total Harmonic Distortion (THD)	< 20%	Full load @230VAC
Power factor	0.95-0.97	Full load @230VAC
Displacement factor	0.95-0.97	Full load @230VAC
Efficiency		Full load @230VAC
G5RT30W600/700LRP	86% (Typ.)	
G5RT30W800LRP	85% (Typ.)	
No-load power	NA	
Stand-by power	NA	
Protection class	NA	
Inrush current	6A / 50us	
Max.units per circuit breaker	Type B , 10A MCB	21
	Type B , 16A MCB	34
	Type C , 10A MCB	26
	Type C , 16A MCB	42
Earth leakage current	NA	
Nominal voltage range		
G5RT30W600/700LRP	25-42Vdc	
G5RT30W800LRP	25-40Vdc	
Maximum voltage	55Vdc	
Nominal current range		
G5RT30W600LRP	600mA	
G5RT30W700LRP	700mA	
G5RT30W800LRP	800mA	
Current accuracy	± 5%	Full load @230VAC
Typical output LF current ripple	± 5%	Low Frequency< 120Hz Full load @230VAC

	Item	Value	Remark
Output	SVM	≤0.4	Full load @230VAC
	PstLM	≤1	Full load @230VAC
	Starting time	< 0.5 S	Full load @230VAC
	Nominal power range		
	G5RT30W600LRP	15-25.2W	
	G5RT30W700LRP	17.5-29.4W	
	G5RT30W800LRP	20-32W	
	Maximum power	32W	
Dimming	Dimming control	Trailing Edge	
	Dimming technique	Amplitude	
	PWM frequency	NA	
	Dimming range	10-100%	
	Lowest dimming current	10%	
	Galvanic isolation	NA	
		Ambient temperature range t <sub>a</sub>	-20°C - +50°C
	Maximum case temperature t <sub>c</sub>	85°C	
	Max. case temp. in fault condition	110°C	When operating under fault conditions, the temperature of the enclosure at any location should not exceed 110 °C
Environment	Storage temperature range	-40°C - +85°C	
	Relative humidity	10% - 95%	
	Surge transient protection	1 kV	L/N
	Environmental rating	Indoor	
	IP rating	IP20	
	Mains switching cycles	> 100,000	
	Expected lifetime	> 50,000 h, t <sub>c</sub> 85 °C @ t <sub>a</sub> 50 °C > 100000 h, t <sub>c</sub> 75 °C @ t <sub>a</sub> 40 °C	0.2 % / 1,000 h failure rate 0.1 % / 1,000 h failure rate
Packing	Gross weight/box	9.4 kg	
	Net weight/box	8.4 kg	
	Pcs/box	56 PCS	
	Dimension/box	490(L)*270(W)*225(H)mm	
<b>Protections</b>			
	Short-circuit Protection	Auto recovery	
	Open-circuit Protection	Auto recovery	
	Overload Protection	Auto recovery	
<b>Conformity &amp; Standards</b>			
	Safety standard:	EN 61347-1, EN 61347-2-13, EN 62493	
	Performance:	EN 62384	
	EMC standard:	EN 55015, EN 61000-3-2, EN 61000-3-3, EN 61547	
	SAA standard:	AS/NZS 61347.1, AS/NZS IEC 61347.2.13	
<b>Cable information</b>			
PRI	Connection	L	N
	Color	Brown	Blue
	Wire type	7022	7022
	Wire diameter	AWG20	AWG20
	Wire length	137mm	137mm
	Stripping	6mm	6mm
	tolerance	±5mm	±5mm

SEC Connection	+	-
Color	Red	Black
Wire type	1332	1332
Wire diameter	AWG22	AWG22
Wire length	136mm	136mm
Stripping	6mm	6mm
tolerance	±5mm	±5mm

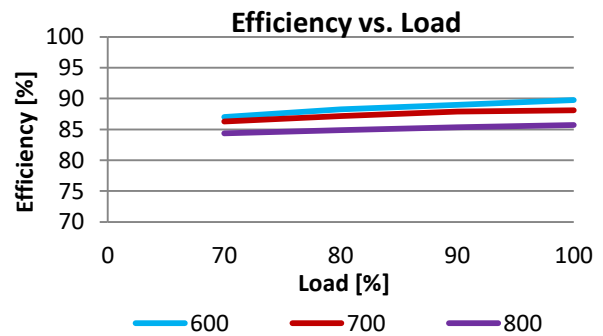
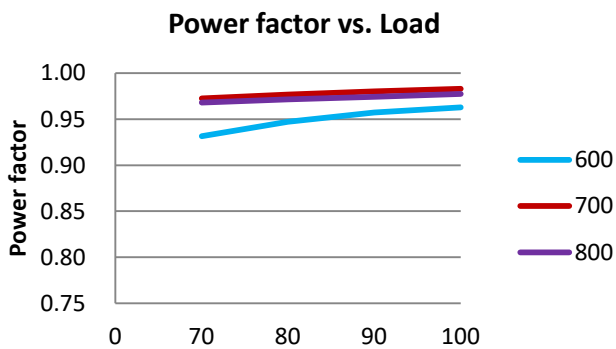
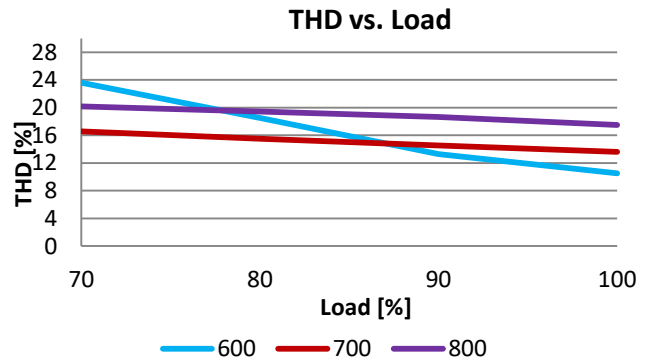
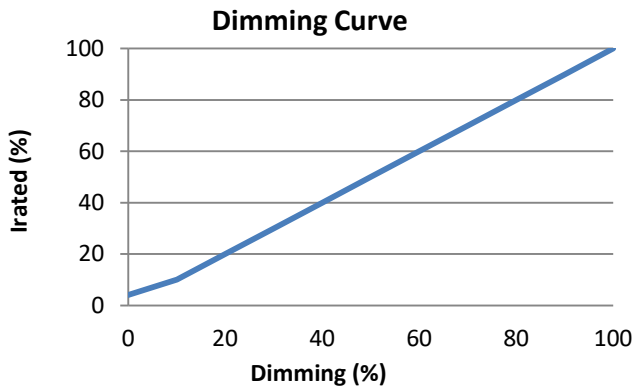
\*Subject to change without notice, HEP guarantees all products perform functionally well\*

\* If not mentioned, all the test conditions are based on full load at 230VAC input (for 220-240 VAC input).

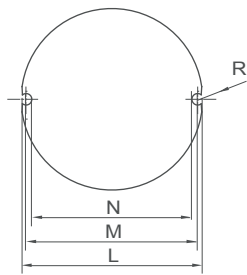
#### Trailing Edge Dimmer list approved by HEP

Manufacturer	Model	Q'ty of parallelconnection
Philips	SED-200A	6
Merten/Schneider	SBD315RC	8
Etman	ETM327	8
Etman	ETM329	8
CASAMBI	CBU-TED	4

### Electrical Values



**Physical Parameter**



L : 65.5 mm    M : 62 mm    N : 58.5 mm

H : 30 mm    R : 1.75 mm

Tolerance : +/-1 mm , R : +/-0.5 mm

Housing Material : Polycarbonate / Potting

Soldering : Lead-Free, Comply With RoHS

Label : Surface Print

**Wiring Diagram**

