



| Item | Value | Remark | | |
|------------------------------|---------------------------------|------------------|-------------------|--|
| Nominal voltage | 220–240V | | | |
| Nominal frequency | 50–60Hz | | | |
| AC voltage range | 198–264V | | | |
| DC voltage range (start) | NA | | | |
| DC voltage range (operation) | NA | | | |
| Maximum voltage | 264Vac | | | |
| Nominal current | | | | |
| G5R30W600LRP | 150mA | | | |
| G5R30W700LRP | 170mA | | | |
| G5R30W800LRP | 175mA | | | |
| Input | Total Harmonic Distortion (THD) | < 15% | Full load @230VAC | |
| | Power factor | 0.9C | Full load @230VAC | |
| | Displacement factor | 0.9C | Full load @230VAC | |
| | Efficiency | 88% (Typ.) | Full load @230VAC | |
| | No-load power | NA | | |
| | Stand-by power | NA | | |
| | Protection class | NA | | |
| | Inrush current | 10A / 305us | | |
| | Max.units per circuit breaker | Type B , 10A MCB | 23 | |
| | | Type B , 16A MCB | 37 | |
| Type C , 10A MCB | | 29 | | |
| Type C , 16A MCB | | 46 | | |
| Earth leakage current | NA | | | |
| Output | Nominal voltage range | | | |
| | G5R30W600/700LRP | 30-42Vdc | | |
| | G5R30W800LRP | 30-40Vdc | | |
| | Maximum voltage | 53Vdc | | |
| | Nominal current range | | | |
| | G5R30W600LRP | 600mA | | |
| | G5R30W700LRP | 700mA | | |
| G5R30W800LRP | 800mA | | | |
| Current accuracy | ± 5% | | | |

| | Item | Value | Remark |
|-----------------------------------|------------------------------------|--|---|
| Output | Typical output LF current ripple | ± 2.5% | Low Frequency<120Hz |
| | Starting time | < 0.5S | Full load @230VAC |
| | Nominal power range | | |
| | G5R30W600LRP | 18-25W | |
| | G5R30W700LRP | 21-29.5W | |
| | G5R30W800LRP | 24-32W | |
| | Maximum power | 32W | |
| Dimming | Dimming control | NA | |
| | Dimming technique | NA | |
| | PWM frequency | NA | |
| | Dimming range | NA | |
| | Lowest dimming current | NA | |
| | Galvanic isolation | NA | |
| Environment | Ambient temperature range t_a | -20°C - +50°C | |
| | Maximum case temperature t_c | 90°C | |
| | Max. case temp. in fault condition | 110°C | When operating under fault conditions, the temperature of the enclosure at any location should not exceed 110 °C. |
| | Storage temperature range | -40°C - +85°C | |
| | Relative humidity | 10% - 95% | |
| | Surge transient protection | 1 kV,2kV | L/N,L-PE/N-PE |
| | Environmental rating | Indoor | |
| | IP rating | IP20 | |
| | Mains switching cycles | > 100,000 | |
| | Expected lifetime | | |
| | Output load 18-32W | > 50,000 h, t_c 90 °C @ t_a 50 °C | 0.2 % / 1,000 h failure rate |
| | Output load 18-32W | > 41,000 h, t_c 90 °C @ t_a 60 °C | 0.24 % / 1,000 h failure rate |
| Packing | Gross weight/box | 14.1 kg | |
| | Net weight/box | 13.4 kg | |
| | Pcs/box | 100 PCS | |
| | Dimension/box | 345(L)*345(W)*175(H)mm | |
| Protections | | | |
| | Short-circuit Protection | Auto recovery | |
| | Open-circuit Protection | Auto recovery | |
| | Overload Protection | Auto recovery | |
| Conformity & Standards | | | |
| | Safety standard: | EN 61347-1, EN 61347-2-13, EN 62493 | |
| | Performance: | EN 62384 | |
| | CCC standard: | GB17625.1,GB/T17743,GB19510.1,GB19510.14 | |
| | SAA standard: | AS/NZS 61347.1, AS/NZS IEC 61347.2.13 | |
| | EMC standard: | EN 55015, EN 61000-3-2, EN 61000-3-3, EN 61547 | |

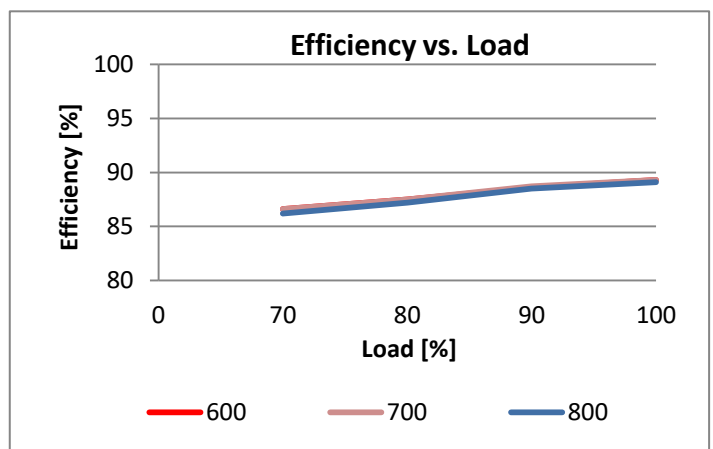
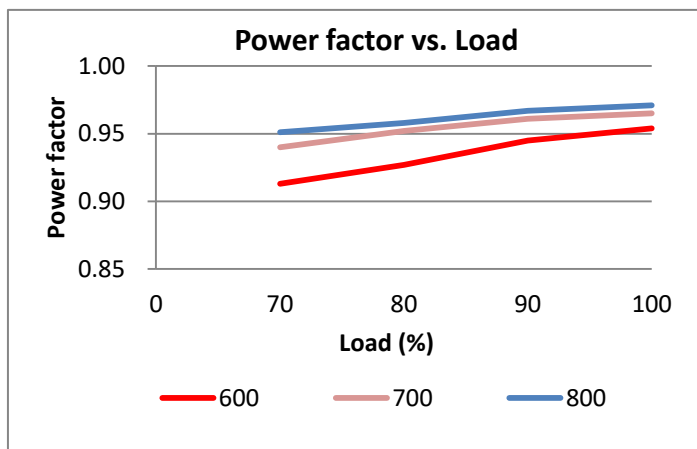
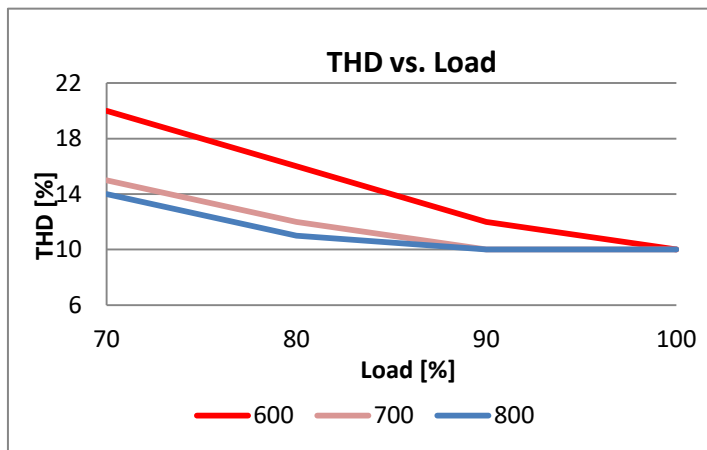
Cable information

| | | |
|-----------------------|-------|-------|
| PRI Connection | L | N |
| Color | Brown | Blue |
| Wire type | 7022 | 7022 |
| Wire diameter | AWG20 | AWG20 |
| Wire length | 143mm | 143mm |
| Stripping | 6mm | 6mm |
| tolerance | ±5mm | ±5mm |
| Sec Connection | + | - |
| Color | Red | Black |
| Wire type | 1332 | 1332 |
| Wire diameter | AWG22 | AWG22 |
| Wire length | 142mm | 142mm |
| Stripping | 6mm | 6mm |
| tolerance | ±5mm | ±5mm |

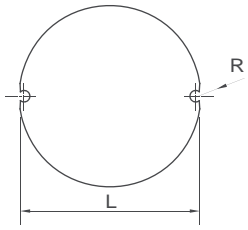
Subject to change without notice, HEP guarantees all products perform functionally well

* If not mentioned, all the test conditions are based on full load at 230VAC input (for 220-240 VAC input).

Electrical Values



**Physical
Parameter**



L : 65 mm H : 27 mm R : 1.7 mm

Tolerance : +/-1 mm , R : +/-0.5 mm

Housing Material : Polycarbonate / Potting

Soldering : Lead-Free, Comply With RoHS

Label : Surface Print

Wiring Diagram

