



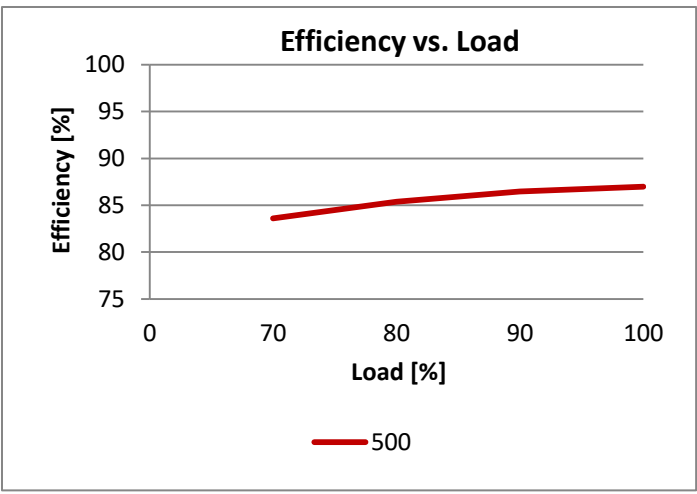
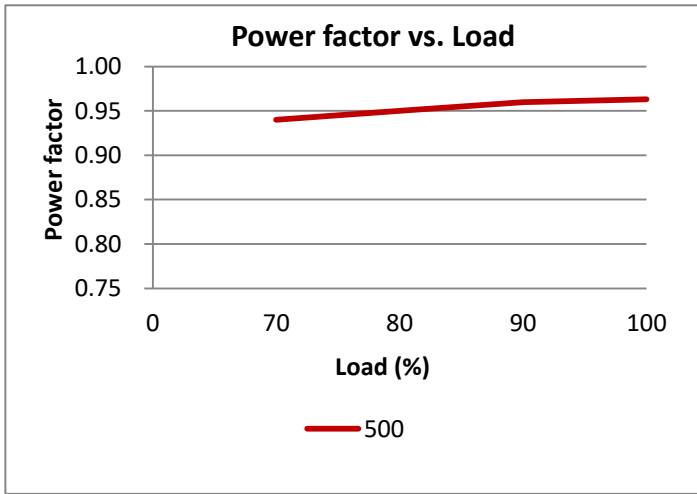
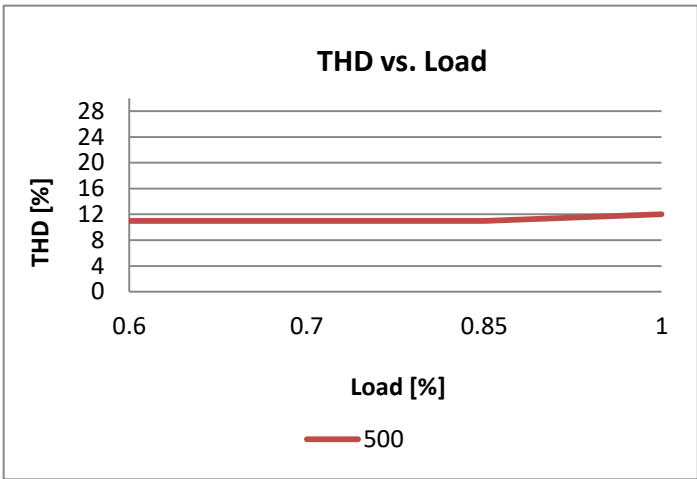
	Item	Value	Remark
Input	Nominal voltage	220–240V	
	Nominal frequency	50–60Hz	
	AC voltage range	198–264V	
	DC voltage range (start)	NA	
	DC voltage range (operation)	NA	
	Maximum voltage	264Vac	
	Nominal current	120mA	
	Total Harmonic Distortion (THD)	< 15%	Full load @230VAC
	Power factor	0.9C	Full load @230VAC
	Displacement factor	0.9C	Full load @230VAC
	Efficiency	86% (Typ.)	Full load @230VAC
	No-load power	NA	
	Stand-by power	NA	
	Protection class	NA	
Max.units per circuit breaker	Inrush current	8.2A / 141us	
		Type B , 10A MCB	33
		Type B , 16A MCB	53
		Type C , 10A MCB	42
		Type C , 16A MCB	67
Output	Earth leakage current	NA	
	Nominal voltage range	30-42Vdc	
	Maximum voltage	53Vdc	
	Nominal current range	500mA	Full load @230VAC
	Current accuracy	± 5%	Full load @230VAC
	SVM	≤ 0.4	Full load @230VAC
	P <sub>stLM</sub>	≤ 1	Full load @230VAC
	Typical output LF current ripple	± 4%	Low Frequency<120Hz
	Starting time	< 0.5S	Full load @230VAC
	Nominal power range	15-21W	
Maximum power	21W		
Dimming	Dimming control	NA	
	Dimming technique	NA	

	Item	Value	Remark
<b>Dimming</b>	PWM frequency	NA	
	Lowest dimming current	NA	
	Galvanic isolation	NA	
	Ambient temperature range $t_a$	-20°C - +50°C	
	Maximum case temperature $t_c$	90°C	
	Max. case temp. in fault condition	110°C	When operating under fault conditions, the temperature of the enclosure at any location should not exceed 110 °C
<b>Environment</b>	Storage temperature range	-40°C - +85°C	
	Relative humidity	10% - 95%	
	Surge transient protection	1 kV,2kV	L/N,L-PE/N-PE
	Environmental rating	Indoor	
	IP rating	IP20	
	Mains switching cycles	> 100,000	
	Expected lifetime		
	Output load 15-21W	> 50,000 h, $t_c$ 90 °C @ $t_a$ 50 °C	0.2 % / 1,000 h failure rate
	Output load 15-21W	> 41,000 h, $t_c$ 90 °C @ $t_a$ 60 °C	0.24 % / 1,000 h failure rate
<b>Packing</b>	Gross weight/box	12.3 kg	
	Net weight/box	11.2 kg	
	Pcs/box	132 PCS	
	Dimension/box	490(L)*275(W)*225(H)mm	
<b>Protections</b>			
	Short-circuit Protection	Auto recovery	
	Open-circuit Protection	Auto recovery	
	Overload Protection	Auto recovery	
<b>Conformity &amp; Standards</b>			
	Safety standard:	EN 61347-1, EN 61347-2-13, EN 62493	
	Performance:	EN 62384	
	CCC standard:	GB17625.1,GB/T17743,GB19510.1,GB19510.14	
	EMC standard:	EN 55015, EN 61000-3-2, EN 61000-3-3, EN 61547	
<b>Cable information</b>			
<b>PRI</b>	Connection	L	N
	Color	Brown	Blue
	Wire type	7022	7022
	Wire diameter	AWG20	AWG20
	Wire length	126mm	135mm
	Stripping	6mm	6mm
	tolerance	±5mm	±5mm
<b>Sec</b>	Connection	+	-
	Color	Red	Black
	Wire type	1332	1332
	Wire diameter	AWG22	AWG22
	Wire length	140mm	140mm
	Stripping	6mm	6mm
	tolerance	±5mm	±5mm

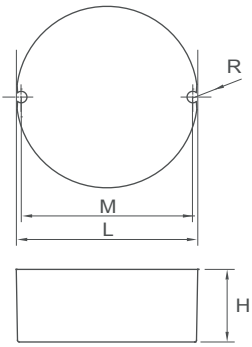
\*Subject to change without notice, HEP guarantees all products perform functionally well\*

\* If not mentioned, all the test conditions are based on full load at 230VAC input (for 220-240 VAC input).

**Electrical Values**



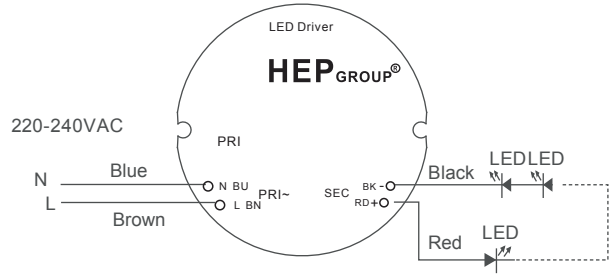
**Physical  
Parameter**



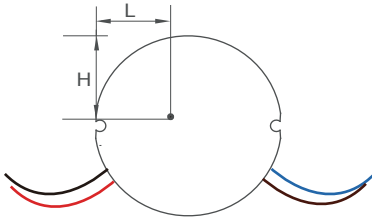
L : 55 mm    M : 52 mm    H : 22 mm  
 R : 1.7 mm  
 Tolerance :  $\geq 0 \sim 100 \geq \pm 0.5\text{mm}$   
 $100 \geq \pm 1\text{ mm}$

Housing Material : Polycarbonate / Potting  
 Soldering : Lead-Free, Comply With RoHS  
 Label : Surface Print

**Wiring Diagram**



**TC point at bottom side of the case**



L : 23 mm    H : 24 mm