

1-10V Dimmer with on/off function



Approval Marks

In Preparation

Electronic

Parameter	Min	Nom	Max	Unit
Dimmer	1	1-10	10	V
Switch Maximum Current	-	-	8	A
Switch Maximum Voltage	-	-	250	V
Sink Current	0	0.25~0.5	25	mA
Rated Input Frequency	-	50-60	-	Hz
Dimming Range	1	-	100	%
Ambient Temp.	-20	-	+50	°C
Suitable Ballast	HEP Dimmable Driver			

Load Type

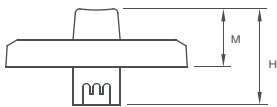
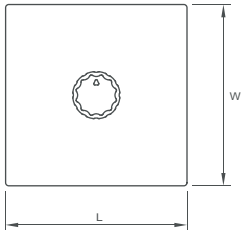
HEP 1-10V Dimmable Driver

Application Space

Indoor Use
(Low Humidity, No Condensation)

Physical

Parameter



L : 86 mm H : 45.4 mm
 M : 27.5 mm K : mm
 N : mm R : mm
 W : 86 mm

Tolerance : $\geq 0 \sim 100 \geq \pm 0.5$ mm
 $100 \sim \geq \pm 1$ mm

Hard Wires : PRI : AWG#18 Red
 SEC : AWG#18 BlackRed

Housing Material : Polycarbonate

Soldering : Lead-Free, Comply With RoHS

Label : Surface Print

Wiring Diagram

