



### Approval Marks



### Electronic

Parameter	Min	Nom	Max	Unit
Dimmer	1	1-10	10	V
Switch Maximum Current	-	-	8	A
Switch Maximum Voltage	-	-	275	V
Sink Current	0	0.25~0.5	25	mA
Rated Input Frequency	-	50-60	-	Hz
Dimming Range	1	-	100	%
Ambient Temp.	-20	-	+50	°C
Suitable Ballast	HEP Dimmable Ballast			

### Load Type

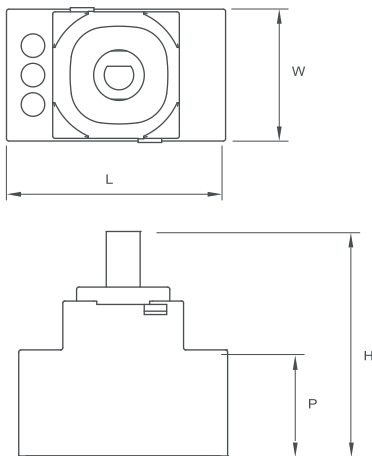
HEP 1-10V Dimmable Ballast

### Application Space

Indoor Use  
(Low Humidity, No Condensation)

### Physical

Parameter



L : 37.2 mm    P : 18.9 mm  
W : 22.4 mm  
H : 40.0 mm

Slot On One Side Allowing Alignment : M+/-3 mm  
Tolerance :  $\geq 0 \sim 100 \geq +/-0.5$  mm  
                   $100 \sim \geq +/-1$  mm

Housing Material : Polycarbonate  
Soldering : Lead-Free, Comply With RoHS  
Label : Surface Print

### Wiring Diagram

